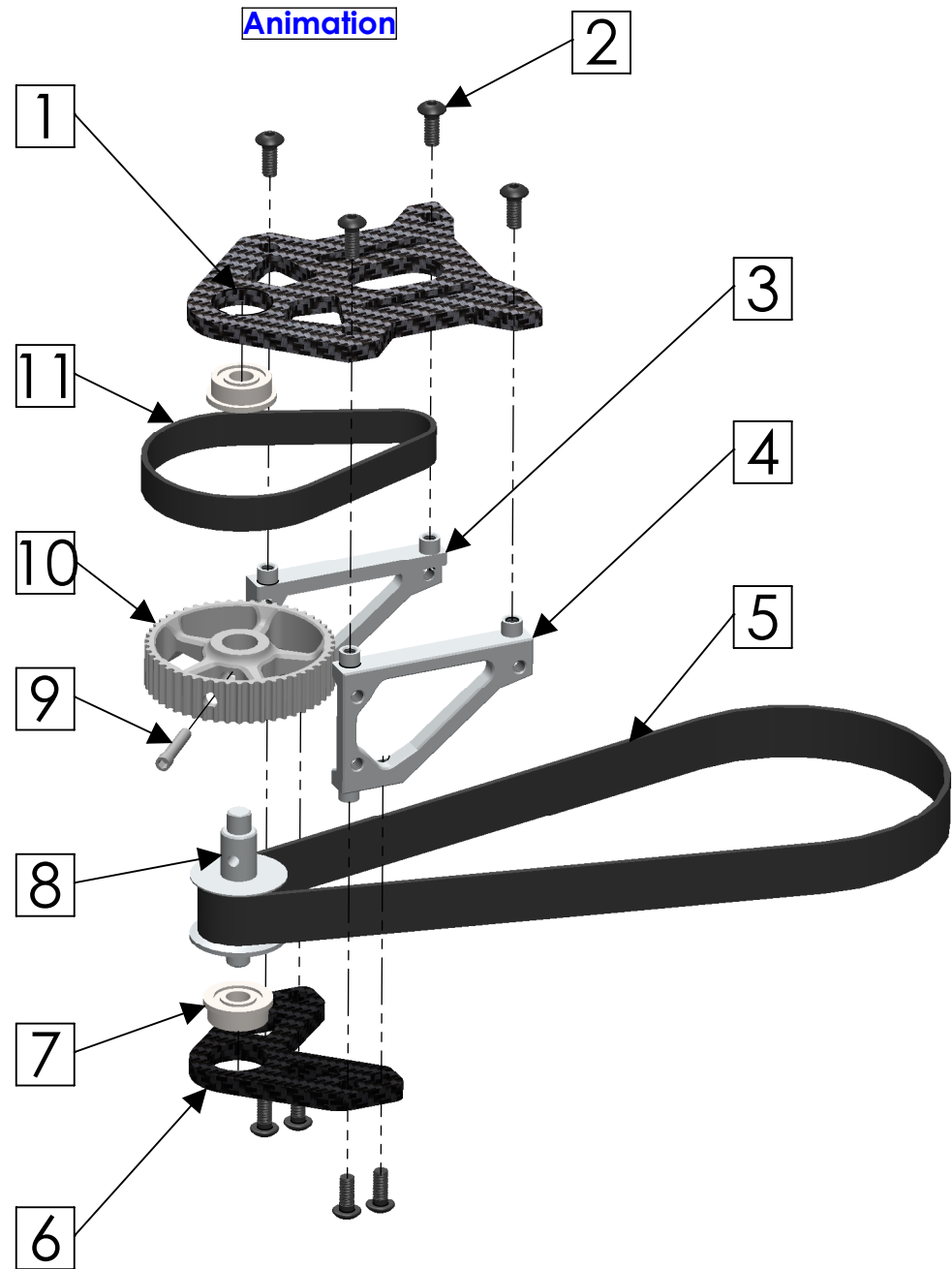
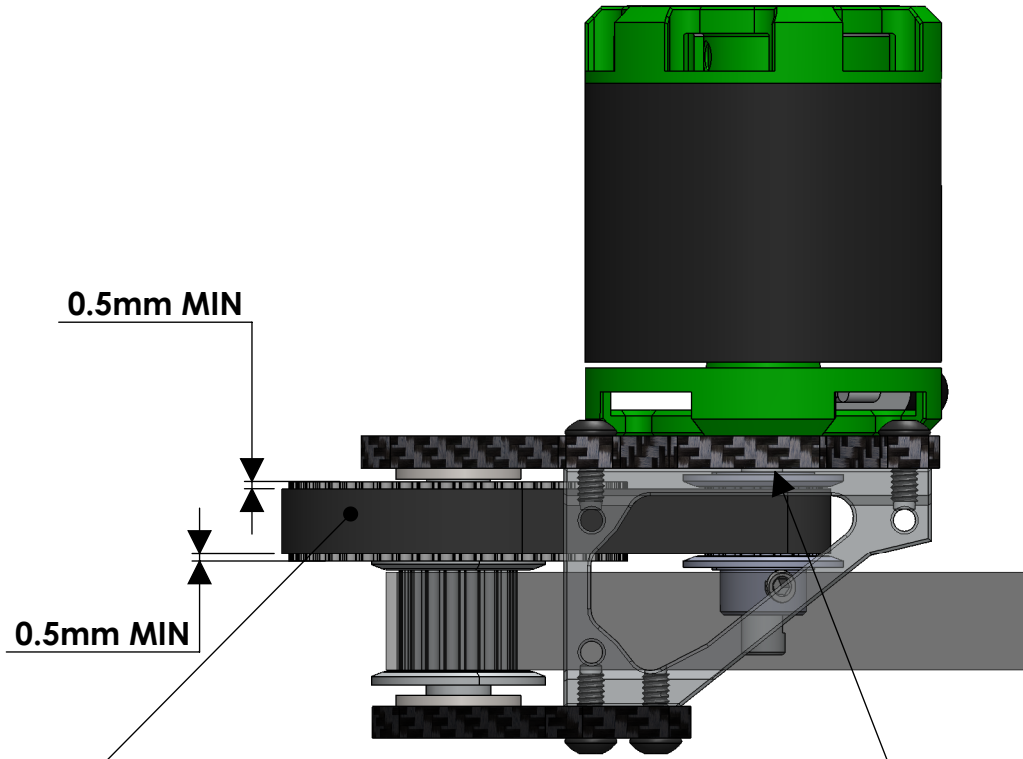


ITEM NO.	PART NUMBER	DESCRIPTION	QTY.
1	KC-360-012	UPPER MOTOR BLOCK	1
2		M2.5 x 6 BUTTON HEAD	8
3	KC-360-011	MOTOR MOUNT BRACKET	1
4	KC-360-011	MOTOR MOUNT BRACKET LEFT	1
5	KC-360-025	MAIN BELT 147MXL-9MM	1
6	KC-360-013	LOWER MOTOR BLOCK	1
7	4x10x4 flange	4x10x4 FLANGE BEARING	2
8		18T 2nd STAGE PINION	1
9		1st STAGE PULLEY PIN	1
10		50T Pulley	1
11	KC-360-024	1st STAGE BELT 63MXL-6MM	1



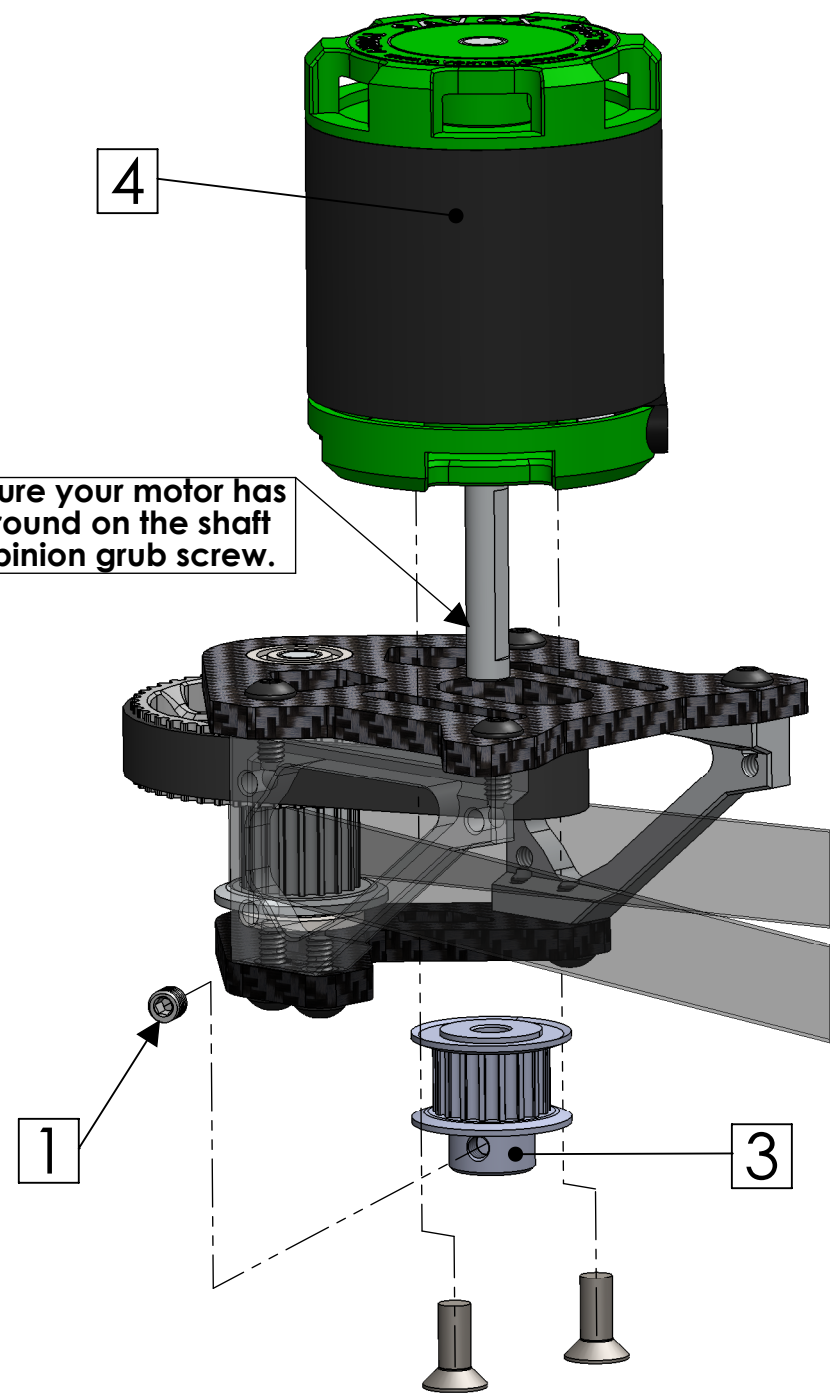
ITEM NO.	PART NUMBER	DESCRIPTION	QTY.
1	M3-3	M3 Grub Screw	1
2		Motor	1
3	KC-360-027	Motor Pinion 18T (19T Option part KC-360-028 )	1
4		Motor	1

This step can be completed at any time.  
But is easier before installing the 1st stage assembly into the model



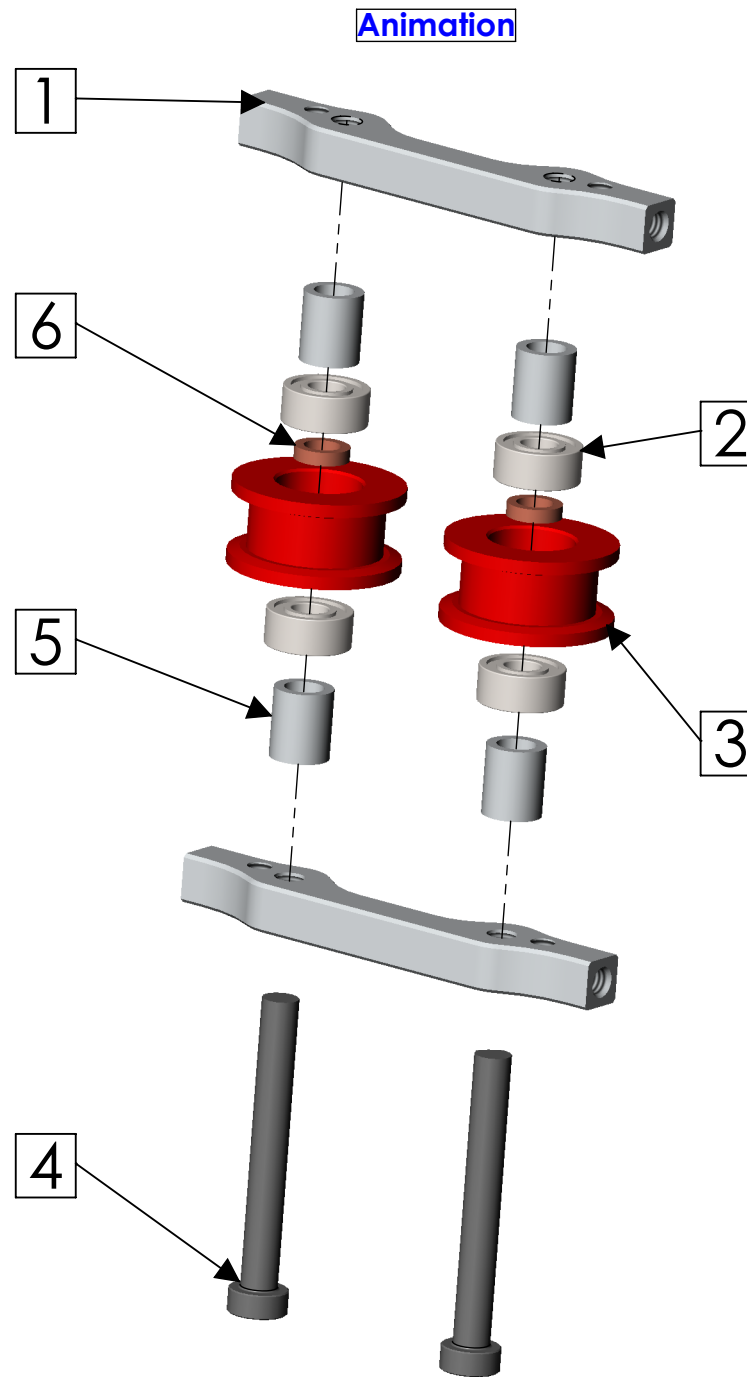
Turn the motor over by hand to test belt positioning.  
Adjust the motor pinion height until the belt runs central on the front pulley

Tip: Positioning the pinion as close to the top plate as possible without rubbing should provide the correct belt alignment.

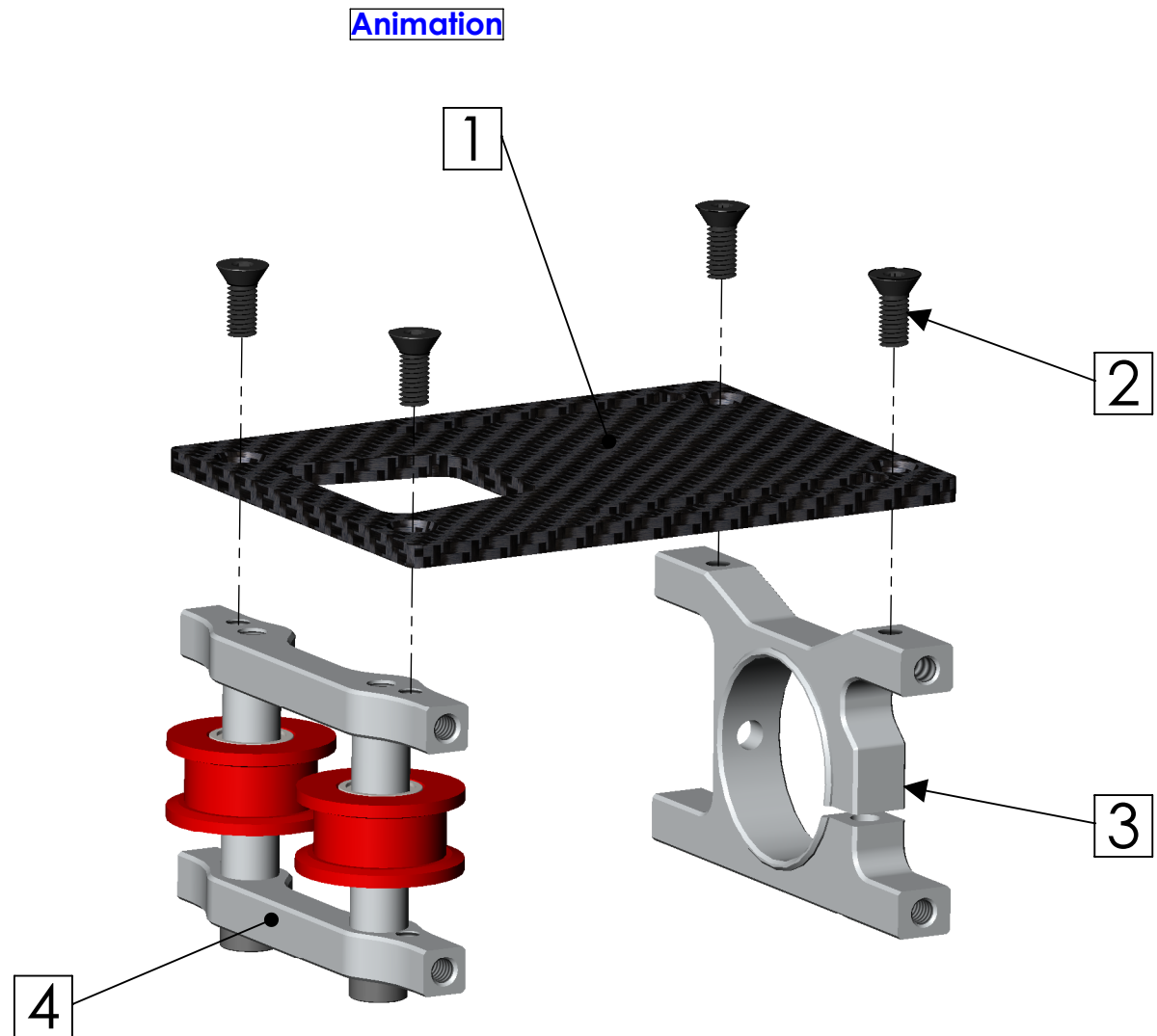


Make sure your motor has a flat ground on the shaft for the pinion grub screw.

ITEM NO.	PART NUMBER	DESCRIPTION	QTY.
1	KC-360-016	PULLEY HOLDER SET	2
2		3x7x3 Bearing	4
3	KC-360-017	GUIDE PULLEY	2
4		M3 x 24	2
5	KC-360-016	SPACER	4
6	KC-360-017	TAIL PULLEY SHIM	2



ITEM NO.	PART NUMBER	DESCRIPTION	QTY.
1		GYRO TRAY	1
2		M2.5 x 6	4
3	KC-360-037	Boom Clamp	1
4		STEP 2	1

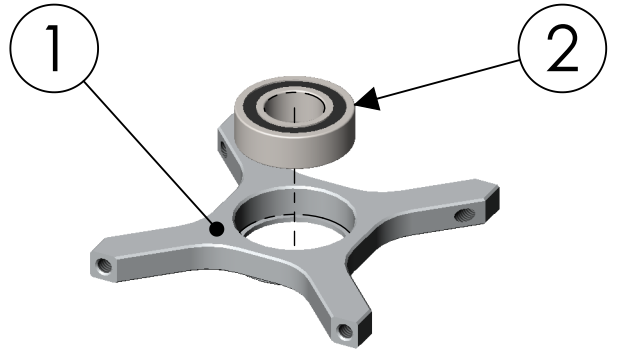
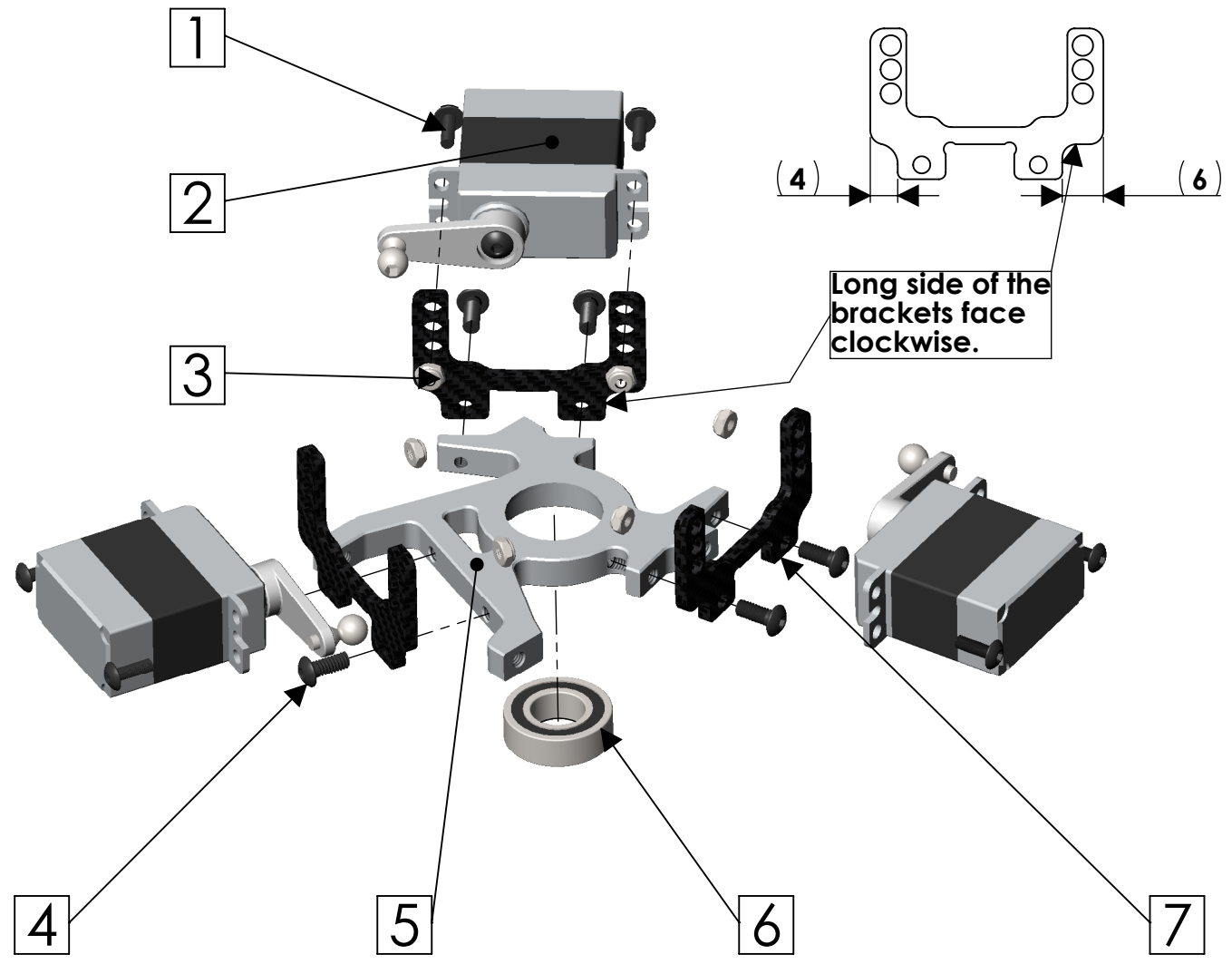
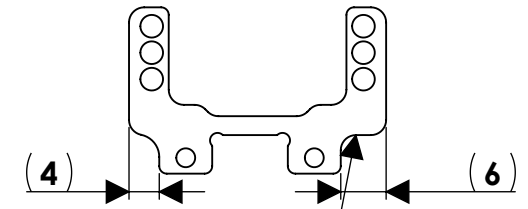
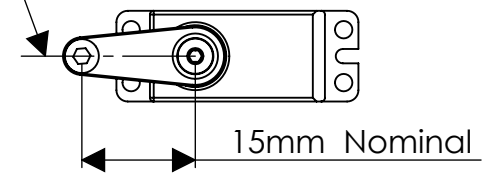


ITEM NO.	PART NUMBER	DESCRIPTION	QTY.
1		M2 x 6	6
2		CYCLIC SERVO	3
3		M2 LOCK NUT	6
4		M2.5 x 6 BUTTON HEAD	6
5	KC-360-008	UPPER BEARING BLOCK	1
6		8x16x5 Bearings	1
7	KC-360-009	SERVO MOUNT	3

ITEM NO.	PART NUMBER	DESCRIPTION	QTY.
1	KC-360-062	LOWER BEARING BLOCK	1
2		8x16x5 Bearings	1

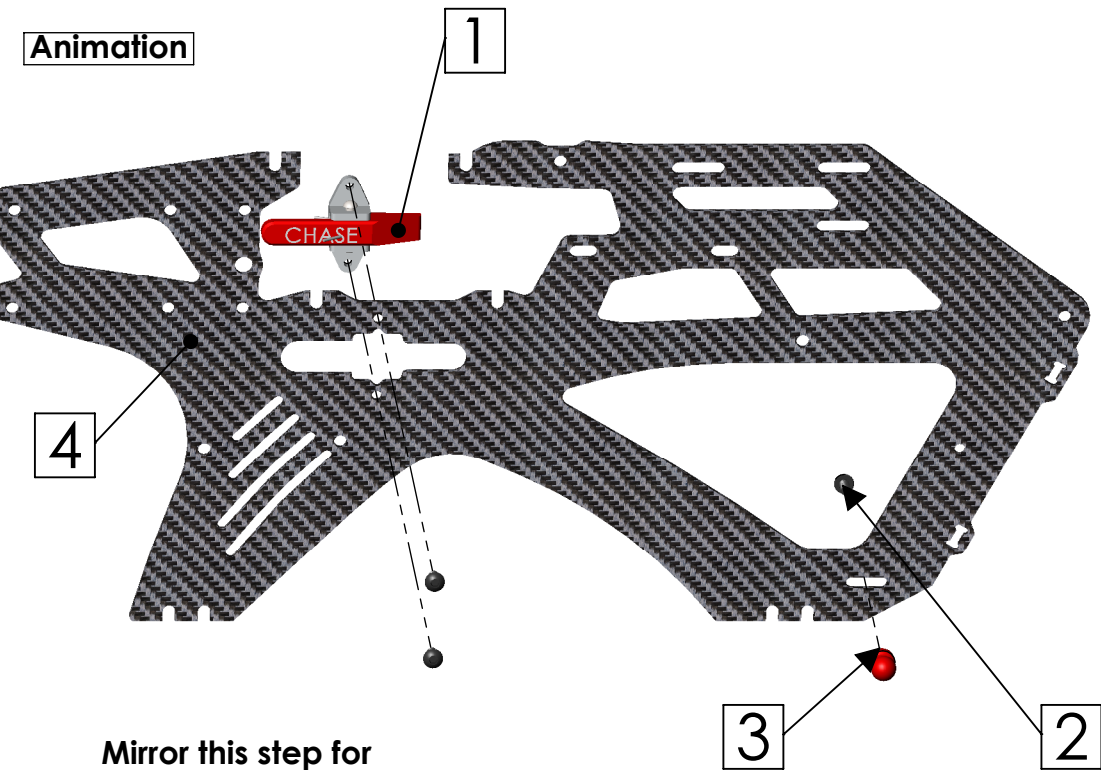
Tip - It is best to position the servo arms on servos (with 0 trim) closest to level during this step .

[Animation](#)

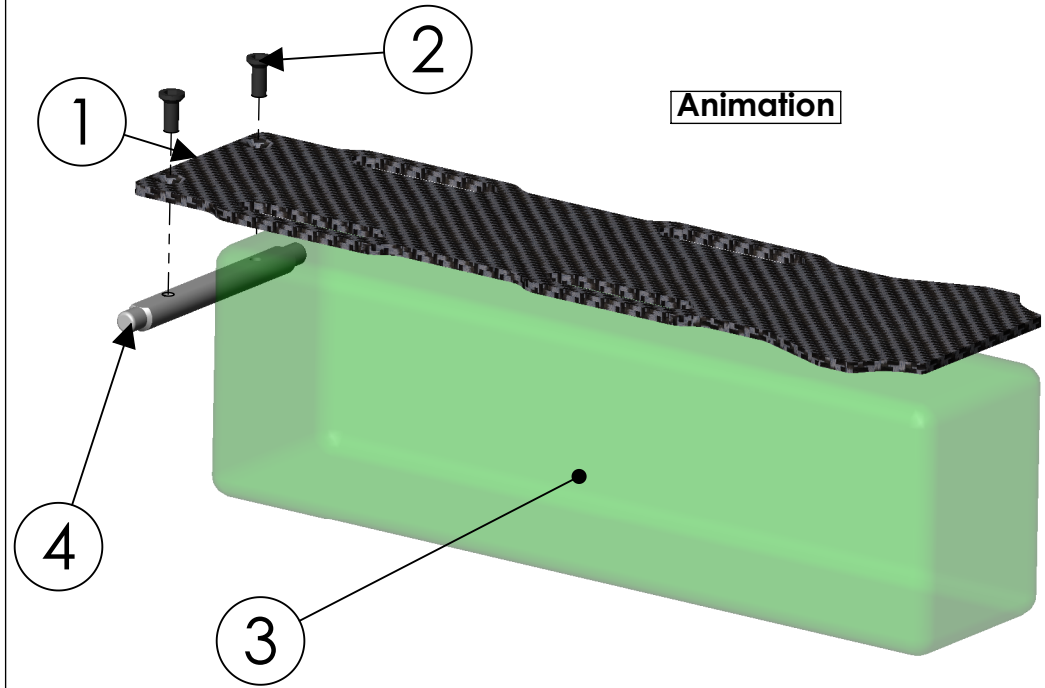
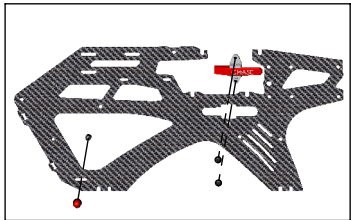


ITEM NO.	PART NUMBER	DESCRIPTION	QTY.
1	KC-360-015	LIPO TRAY CLIP	1
2		M2 x 4 - Button head	3
3		CANOPY POST	1
4	KC-360-034	SIDEFAME	1

Animation



Mirror this step for Left side frame.



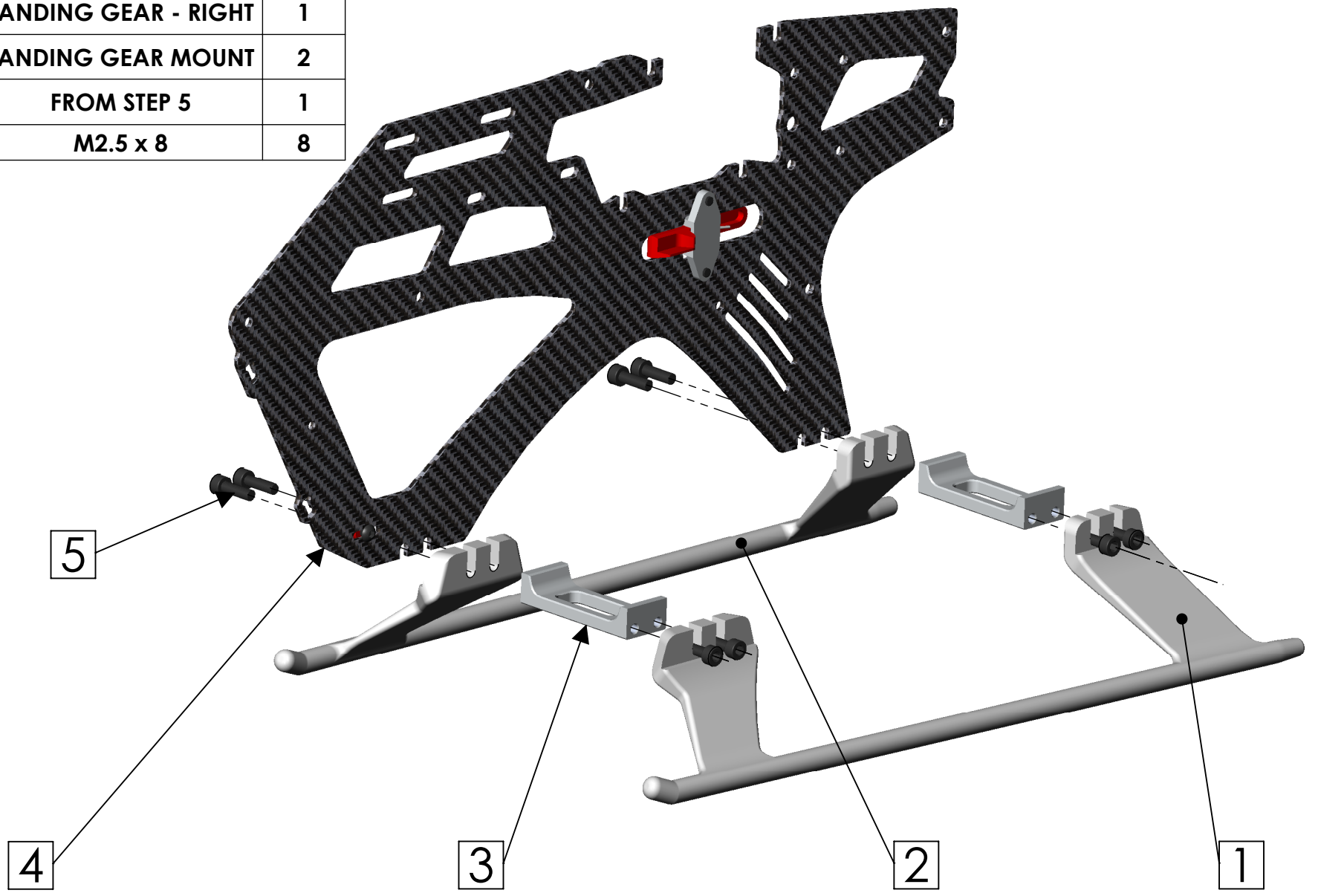
Animation

Recommended lipo 1300 - 1500 mha.  
 Size restrictions 39mm x 45mm x 116mm.  
 Or unlimited length with front tail servo mount option (Refer to Step 26)


ITEM NO.	PART NUMBER	DESCRIPTION	QTY.
1	KC-360-036	LIPO TRAY	1
2		M2 x 5 PHILLIPS	2
3		LIPO 1300 - 1600	1
4	KC-360-036		1

ITEM NO.	PART NUMBER	DESCRIPTION	QTY.
1	KC-360-039	LANDING GEAR - LEFT	1
2	KC-360-039	LANDING GEAR - RIGHT	1
3	KC-360-040	LANDING GEAR MOUNT	2
4		FROM STEP 5	1
5		M2.5 x 8	8

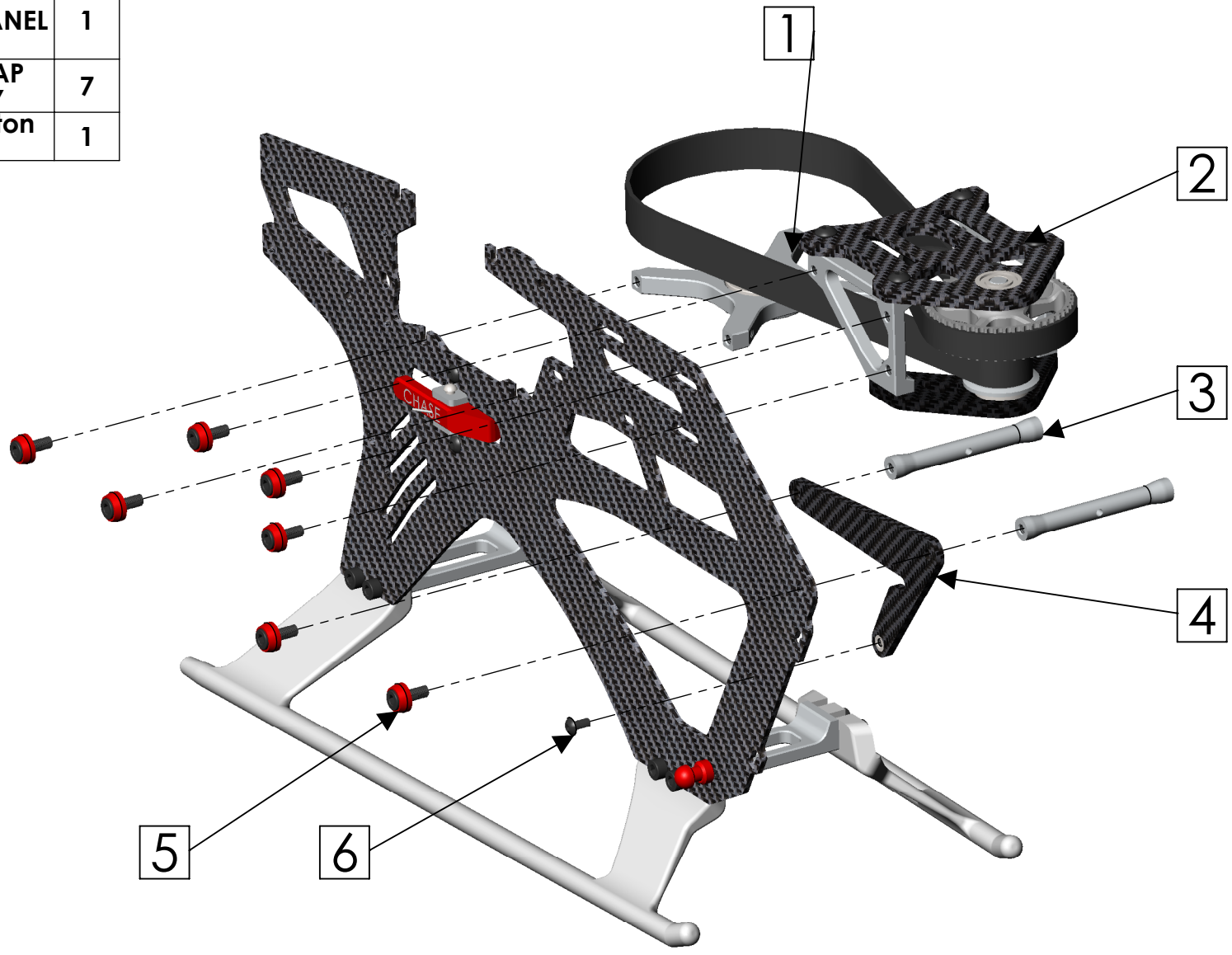
[Animation](#)





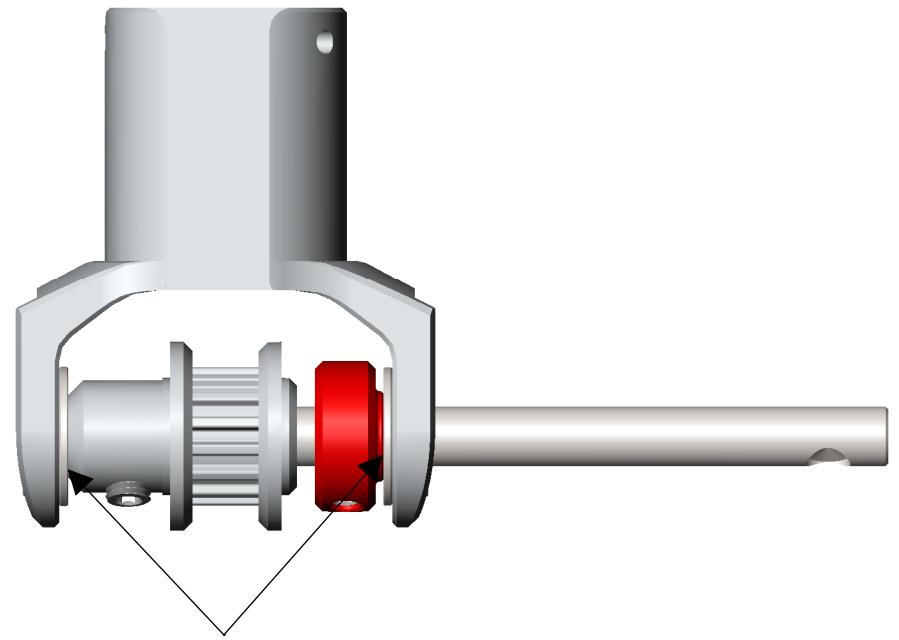
ITEM NO.	PART NUMBER	DESCRIPTION	QTY.
1	LOWER BLOCK	FROM STEP 4	1
2	Motor mount - 1st stage reduction	FROM STEP 1	1
3		FRAME SPACERS	2
4	KC-360-019	LIPO SLIDE PANEL	1
5		M2.5 x 6 CAP ASSEMBLY	7
6		M2 x 4 - Button head	1

**Animation**

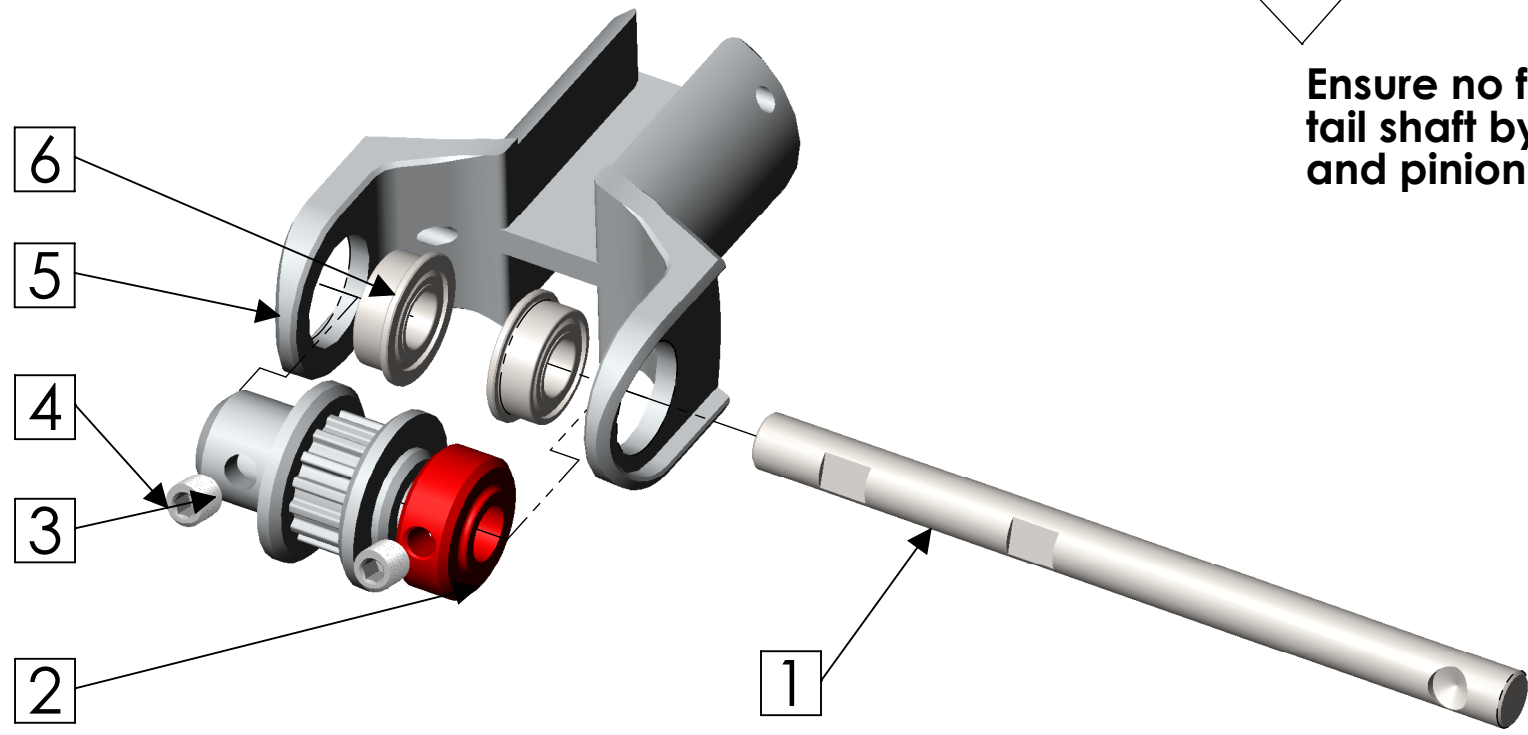


ITEM NO.	PART NUMBER	DESCRIPTION	QTY
1	KC-360-022	Tail shaft	1
2	KC-360-057	Tail shaft Lockign Coller	1
3	KC-360-033	Tail Pinion 15T	1
4		M3 Grub Screw	2
5	KC-360-041	Tail Box	1
6		4x8x3 Flange	2

[Animation](#)

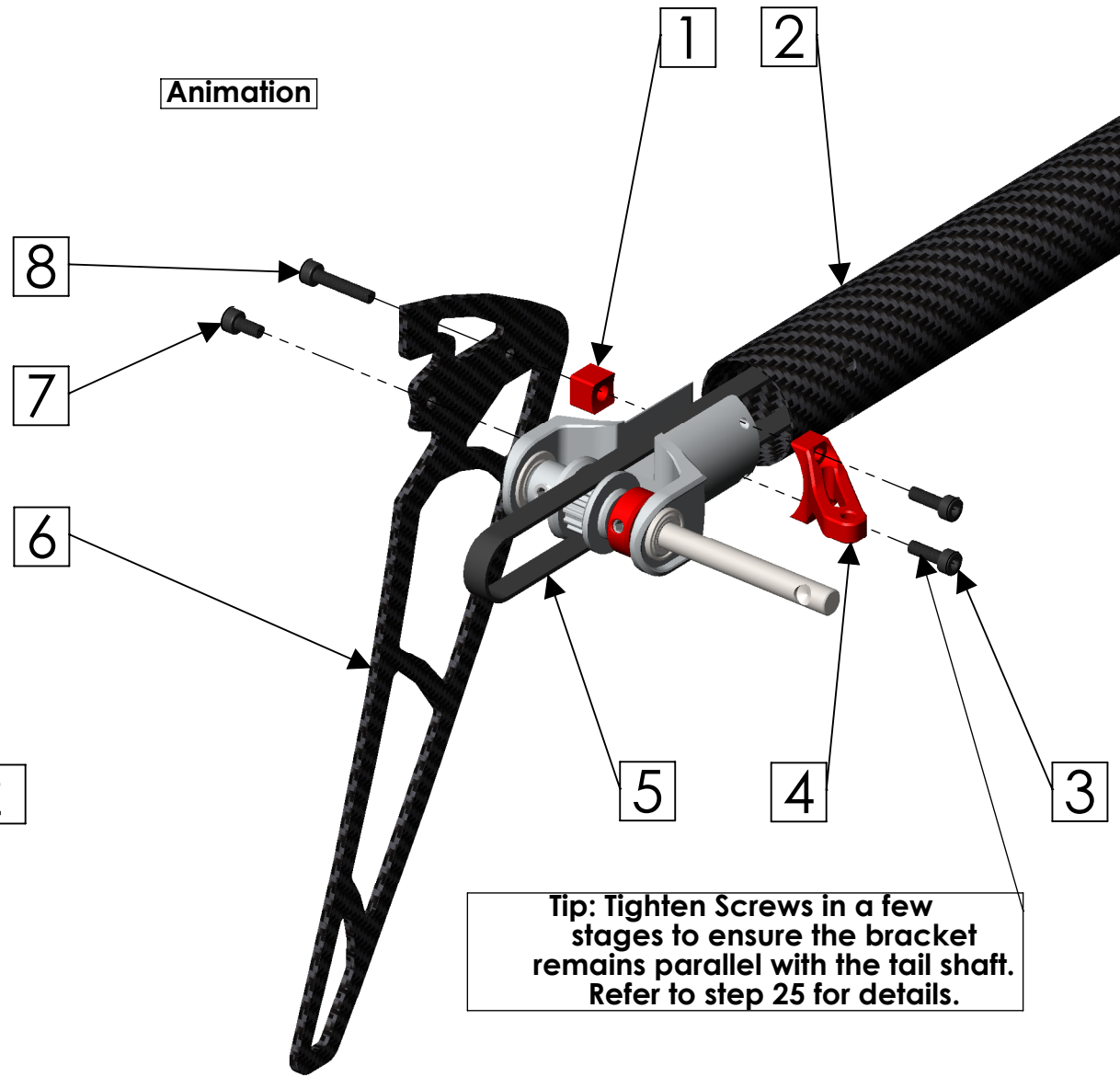


Ensure no free play in the tail shaft by fastening the Locking collet and pinion against the bearings.

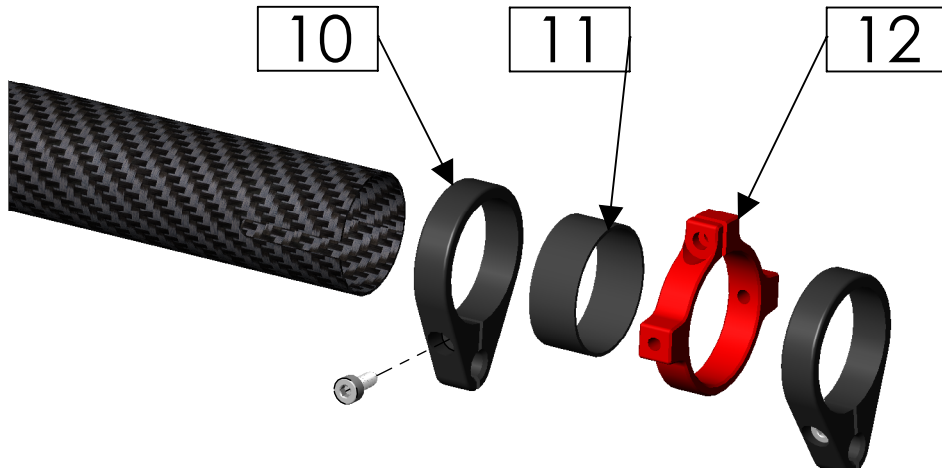


ITEM NO.	PART NUMBER	DESCRIPTION	QTY.
1		Fin Spacer	1
2	KC-360-054	Tail Boom	1
3		M2 x 6	2
4		Pitch Slider Bracket	1
5		Tail Belt	1
6		Tail Fin	1
7		M2 x 4	1
8		M2 x 10	1
9		Step 8-Tail box assembly	1
10			2
11			1
12			1

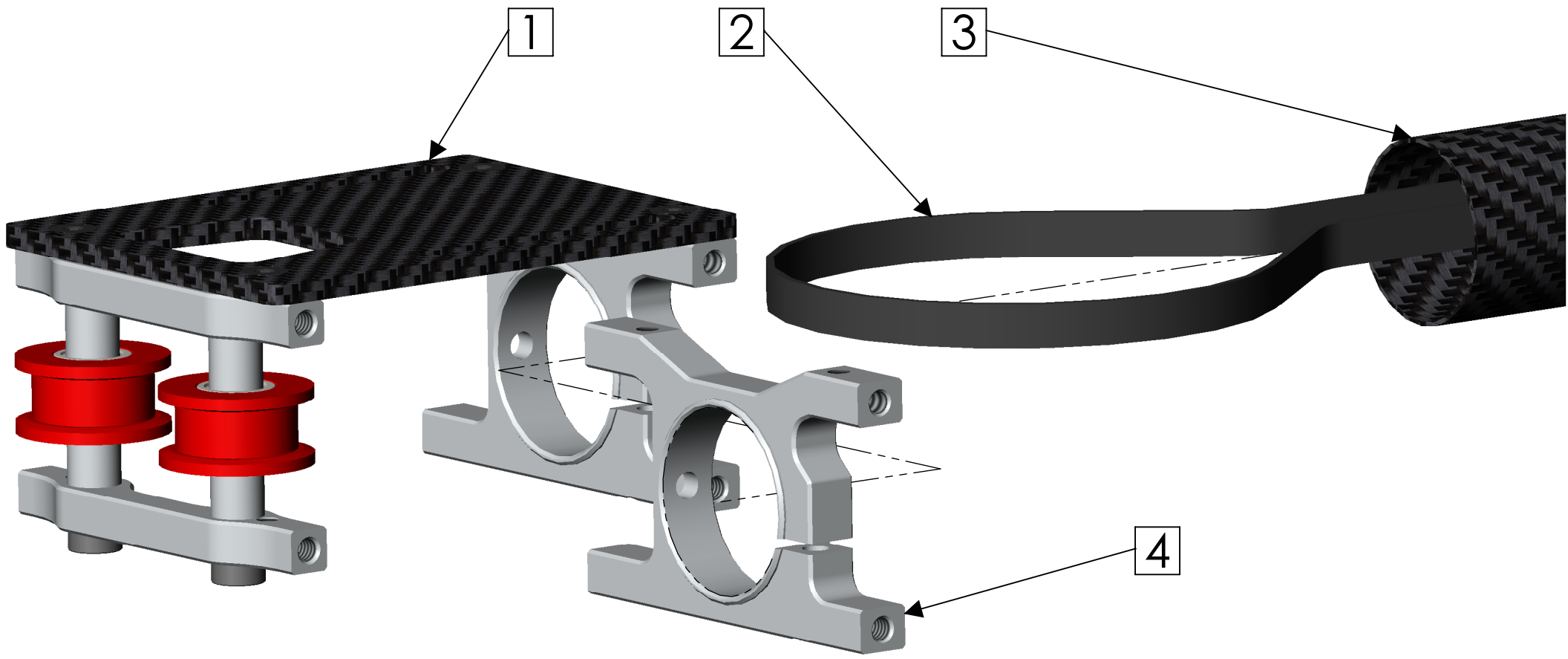
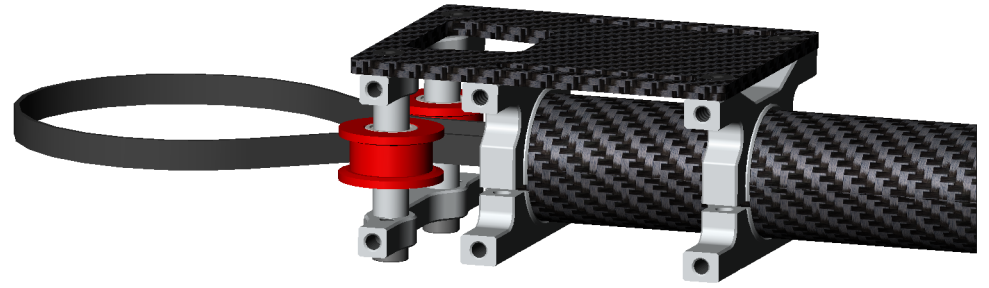
Animation



Tip: Tighten Screws in a few stages to ensure the bracket remains parallel with the tail shaft. Refer to step 25 for details.



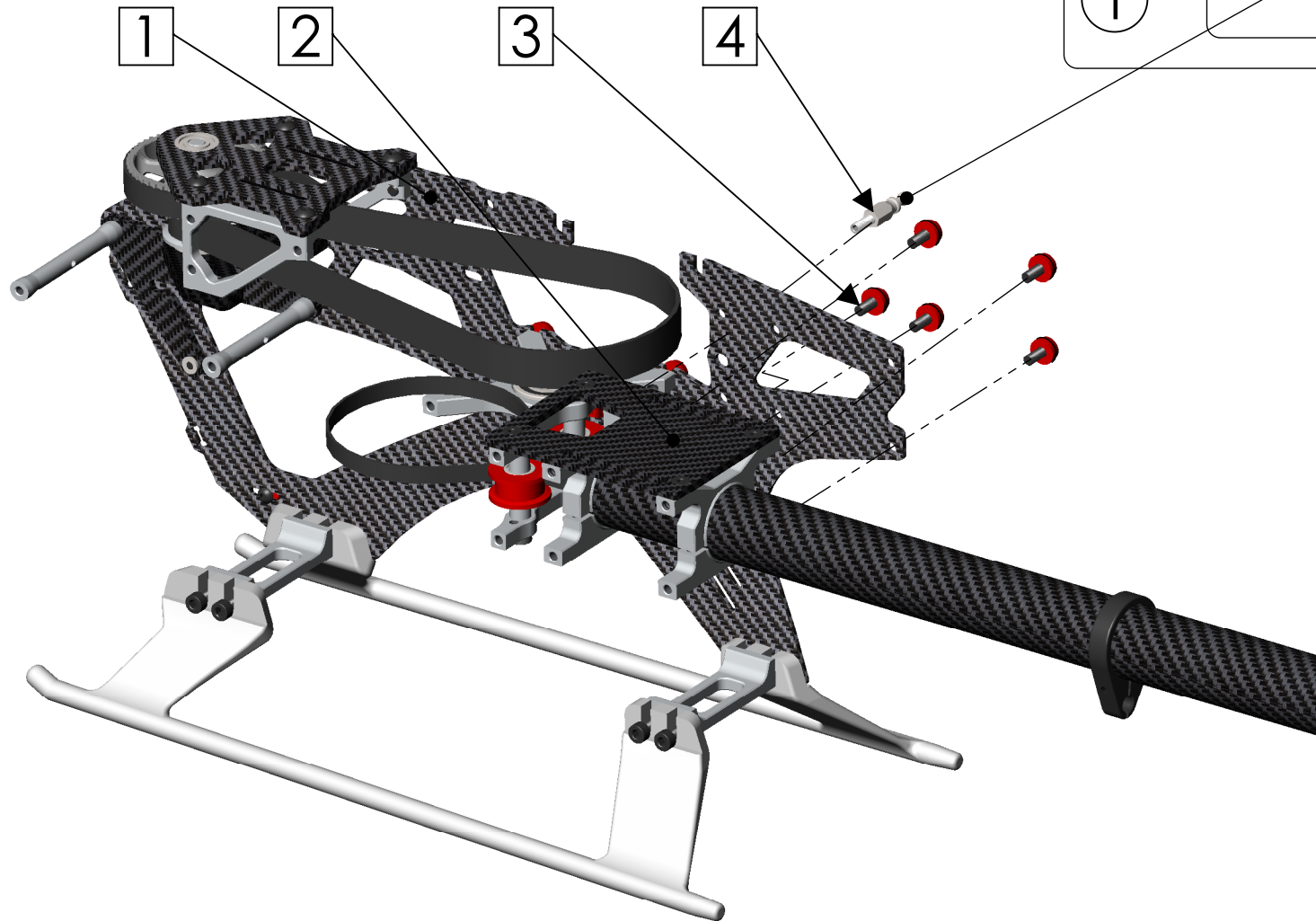
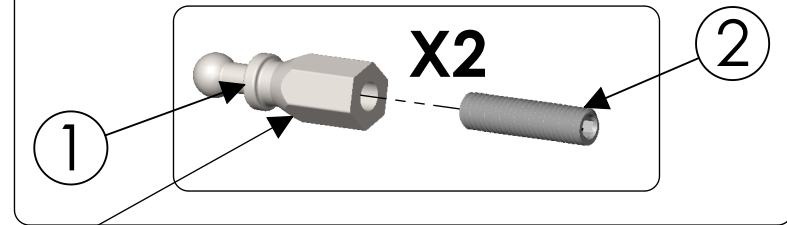
ITEM NO.	PART NUMBER	DESCRIPTION	QTY.
1	Step 3	Parts From Step 3	1
2	KC-360-026	Tail Belt	1
3	Step 9	Parts from Step 9	1
4	KC-360-037	Boom Clamp	1



ITEM NO.	PART NUMBER	DESCRIPTION	QTY.
1	Step 5	Parts From Step 5	1
2	Step 10	Parts From Step 10	1
3		M2.5 x 6 CAP ASSEMBLY	5

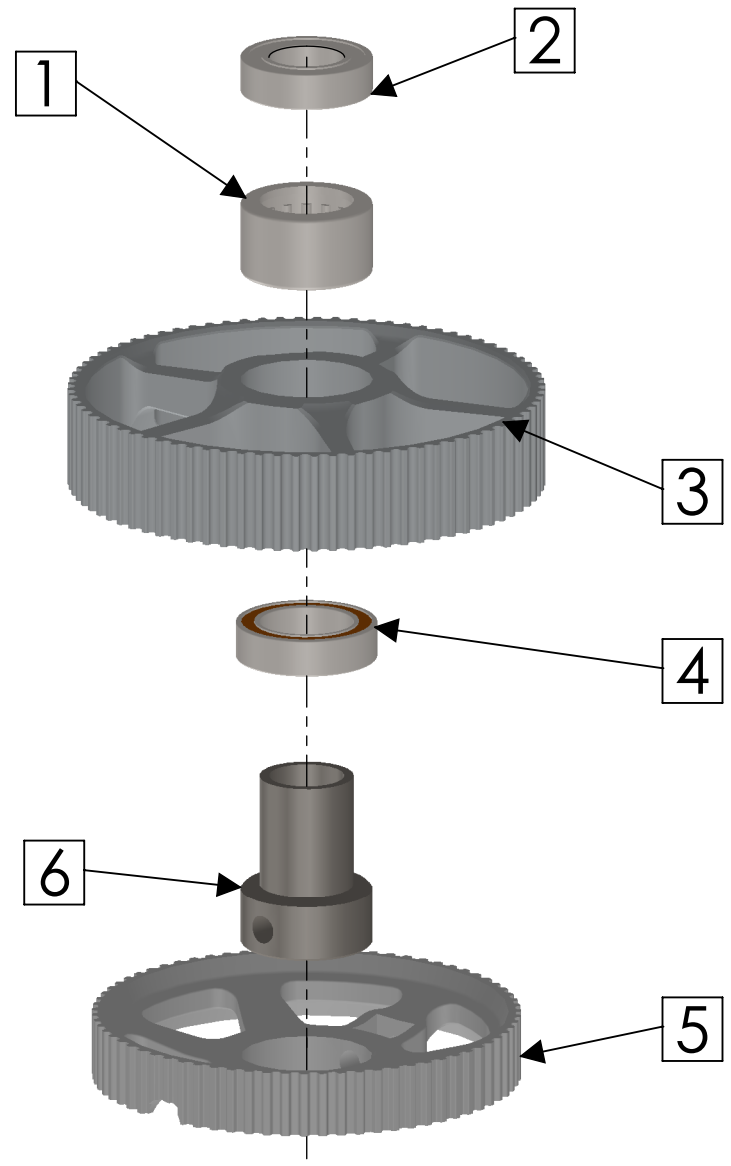
[Animation](#)

ITEM NO.	PART NUMBER	DESCRIPTION	QTY.
1		Canopy Standoff	1
2		M2.5 x 10mm Grub Screw	1



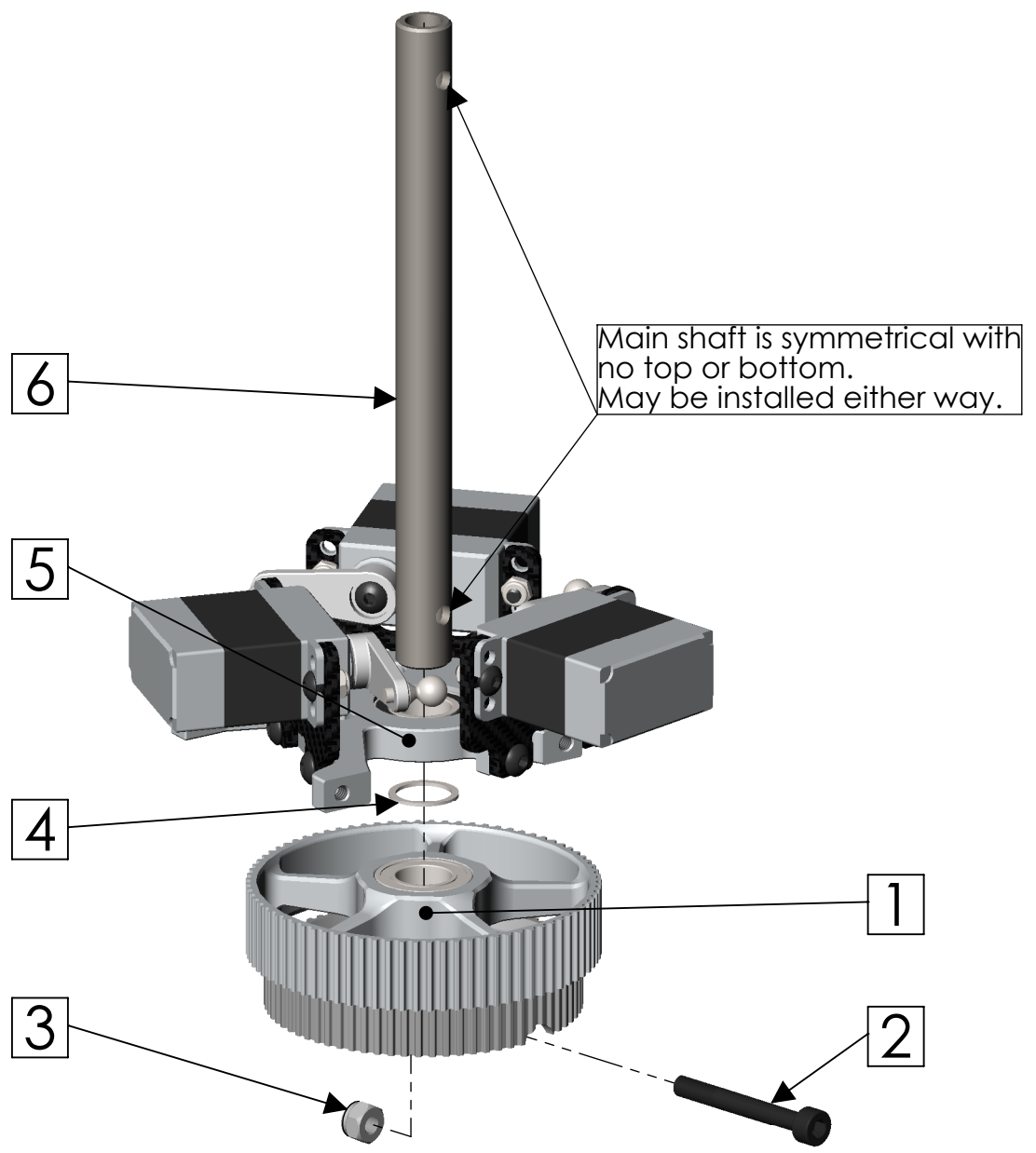
ITEM NO.	PART NUMBER	DESCRIPTION	QTY.
1			1
2			1
3			1
4			1
5			1
6			1

Animation



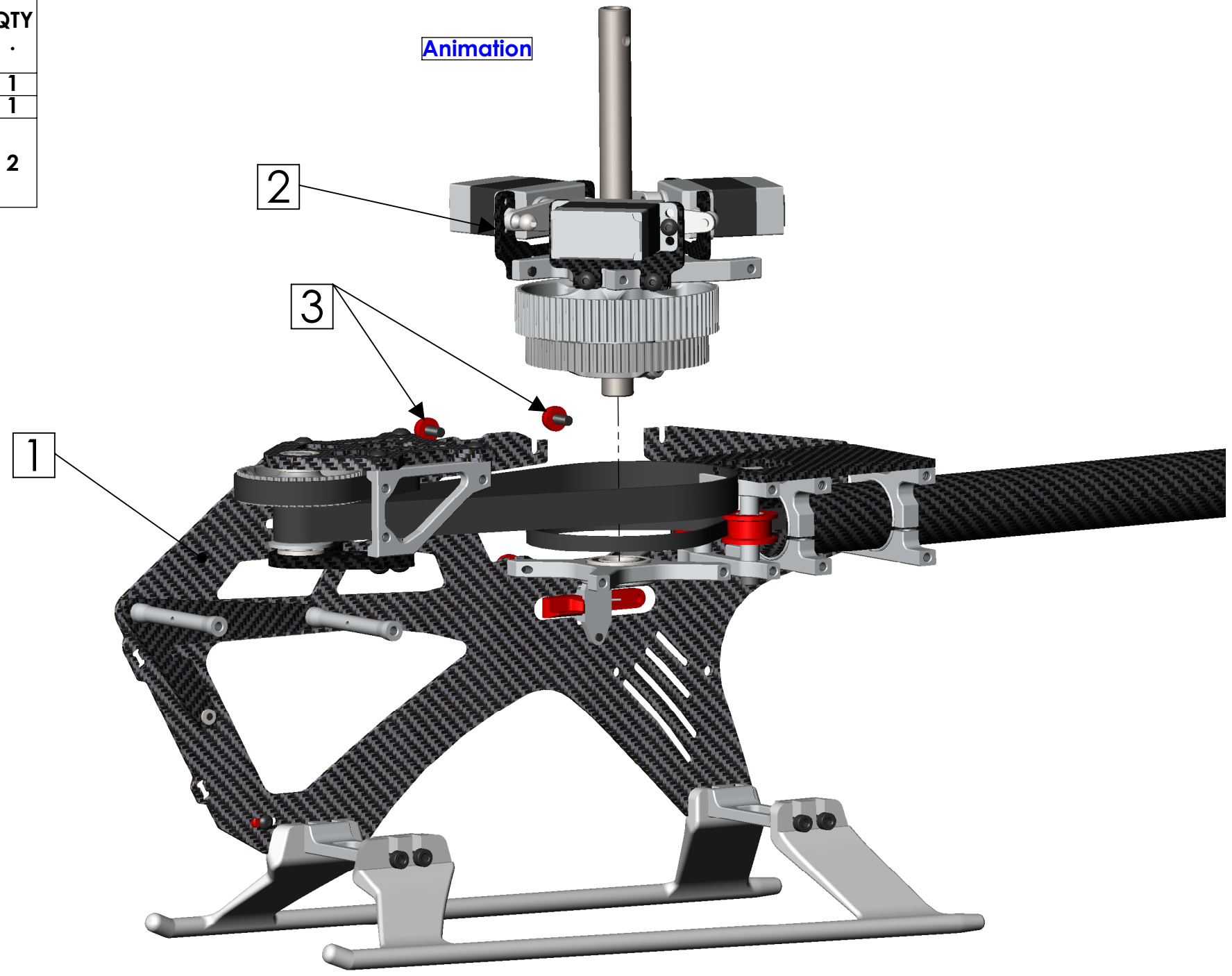
ITEM NO.	PART NUMBER	DESCRIPTION	QTY.
1		Parts From Step 12	1
2			1
3			1
4			1
5		Parts From Step 4	1
6			1

Animation



ITEM NO.	PART NUMBER	DESCRIPTION	QTY.
1	Step 11		1
2	Step 13		1
3		M2.5 x 6 CAP ASSEMBLY	2

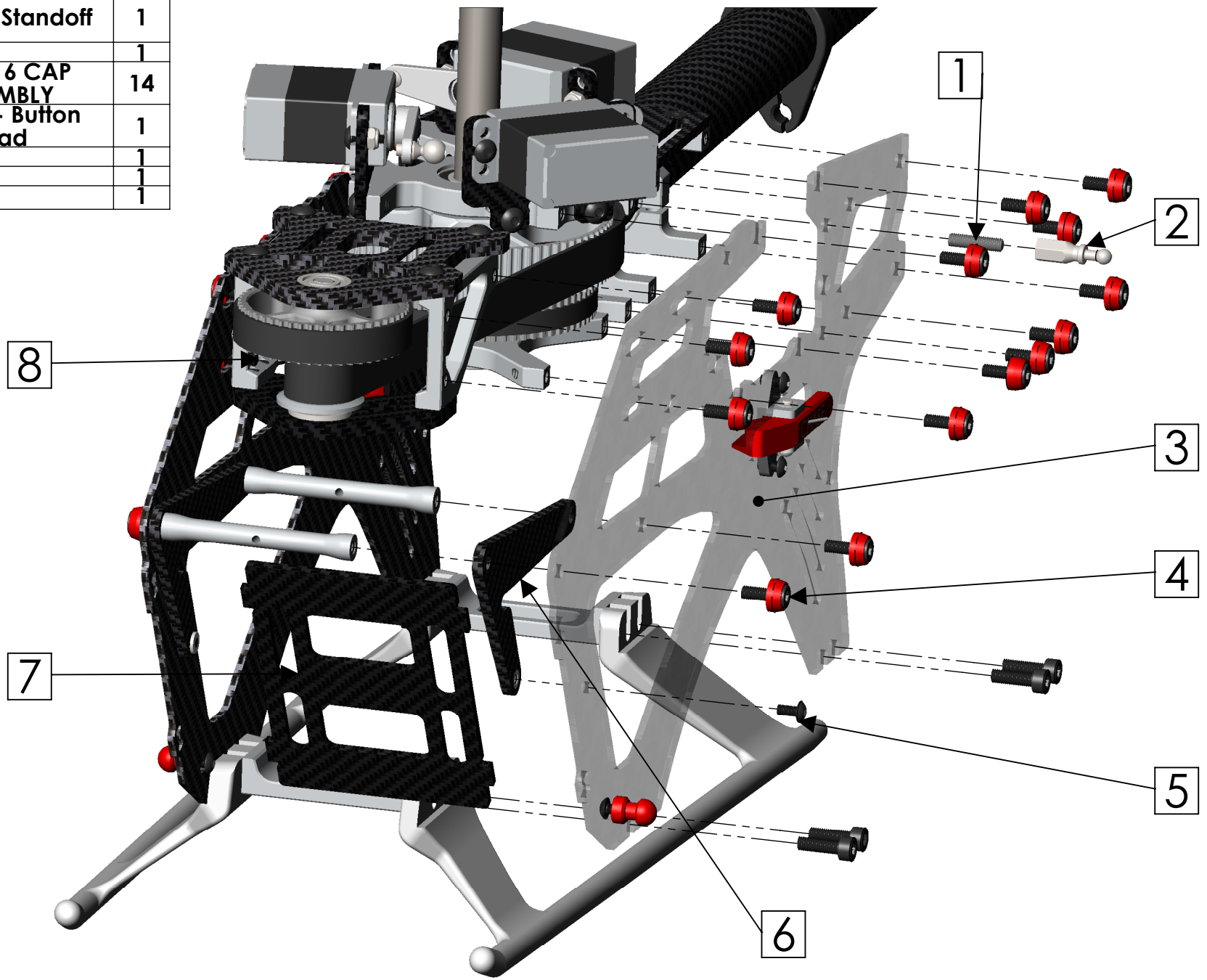
Animation



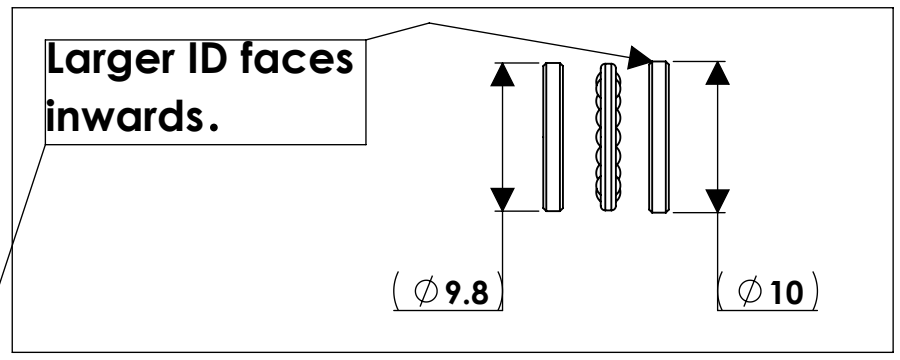


ITEM NO.	PART NUMBER	DESCRIPTION	QTY.
1		M2.5 x 10mm Grub Screw	1
2		Canopy Standoff	1
3			1
4		M2.5 x 6 CAP ASSEMBLY	14
5		M2 x 4 - Button head	1
6			1
7			1
8	Step 14		1

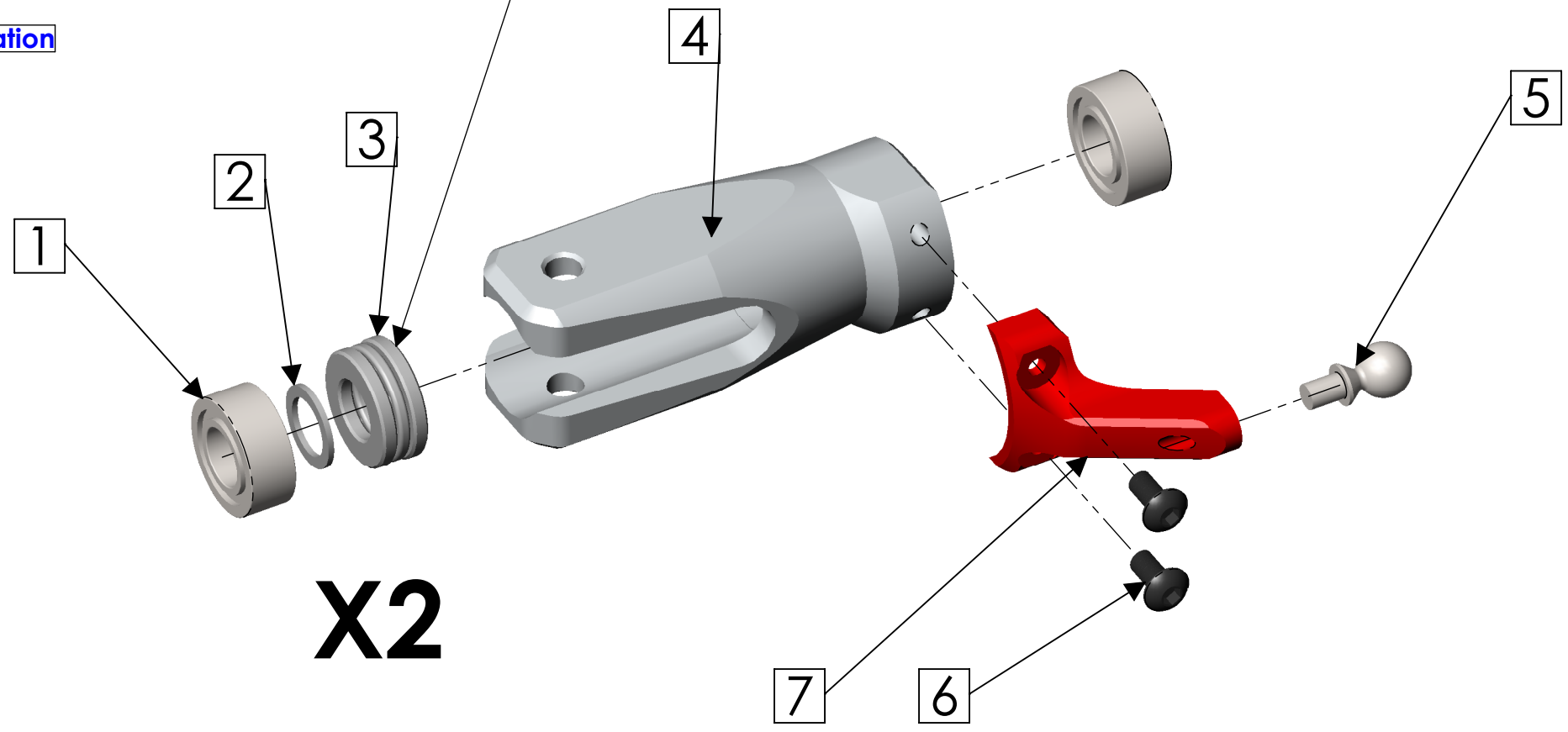
[Animation](#)



ITEM NO.	PART NUMBER	DESCRIPTION	QTY
1			2
2			1
3			1
4			1
5			1
6			2
7			1

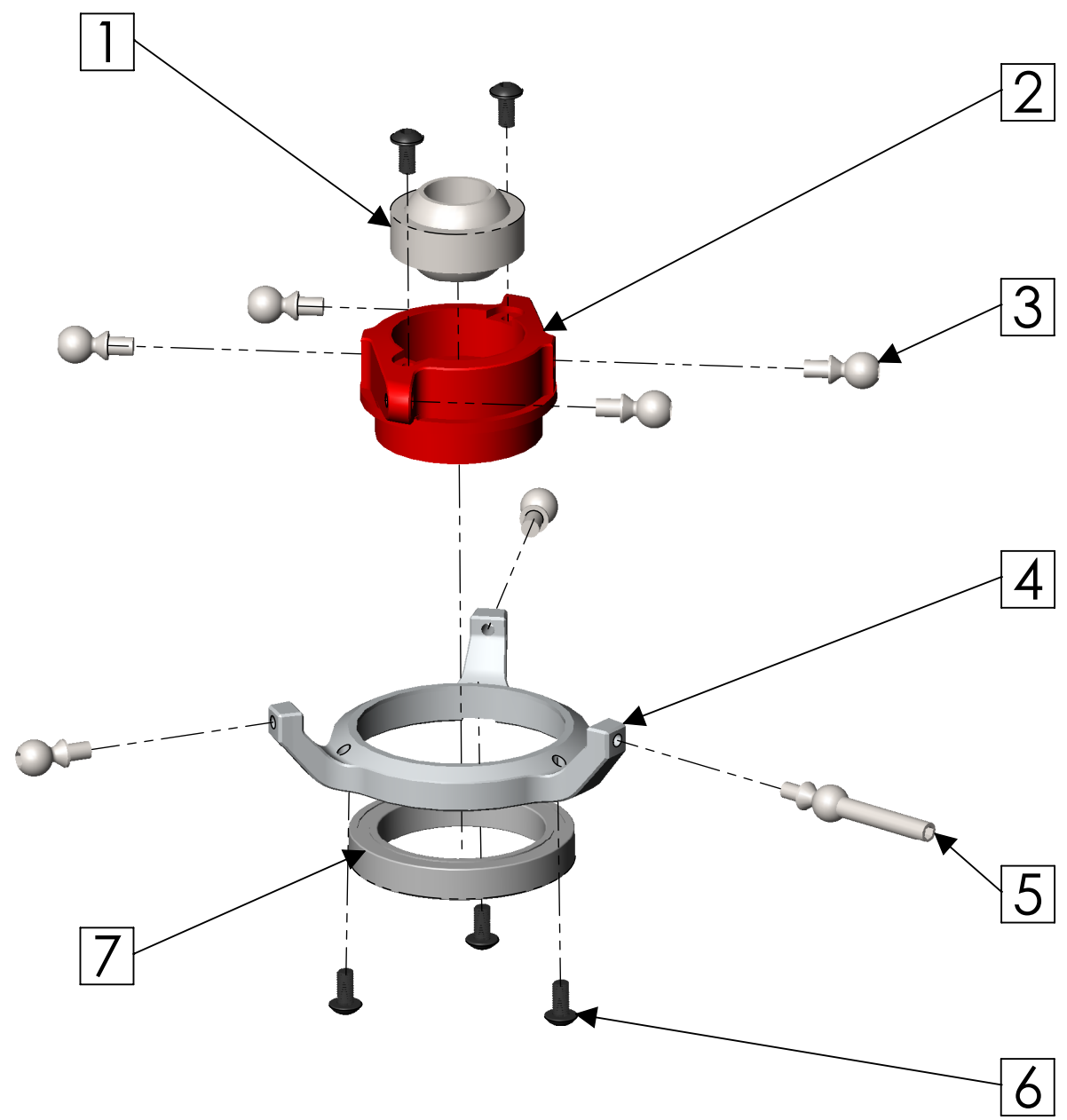


Animation



ITEM NO.	PART NUMBER	DESCRIPTION	QTY.
1	Sspherical bush - 16x8		1
2	Swash inner		1
3	Balls M		6
4	Swash outer		1
5	Ball - Anti rotation		1
6	M2 x 4		5
7		20x27x4	1

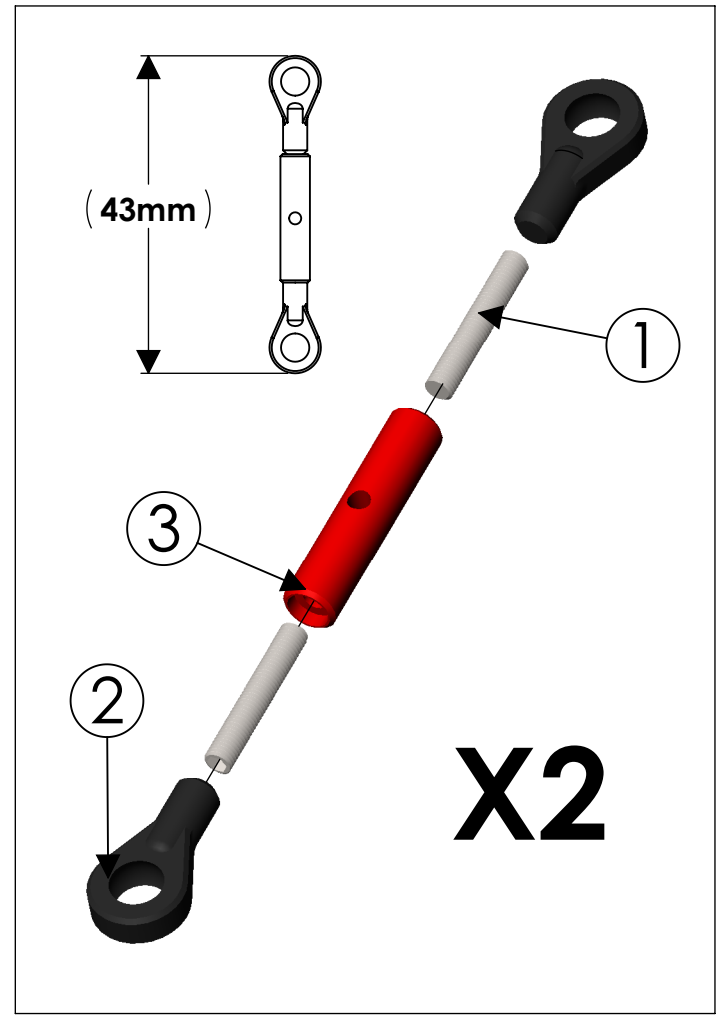
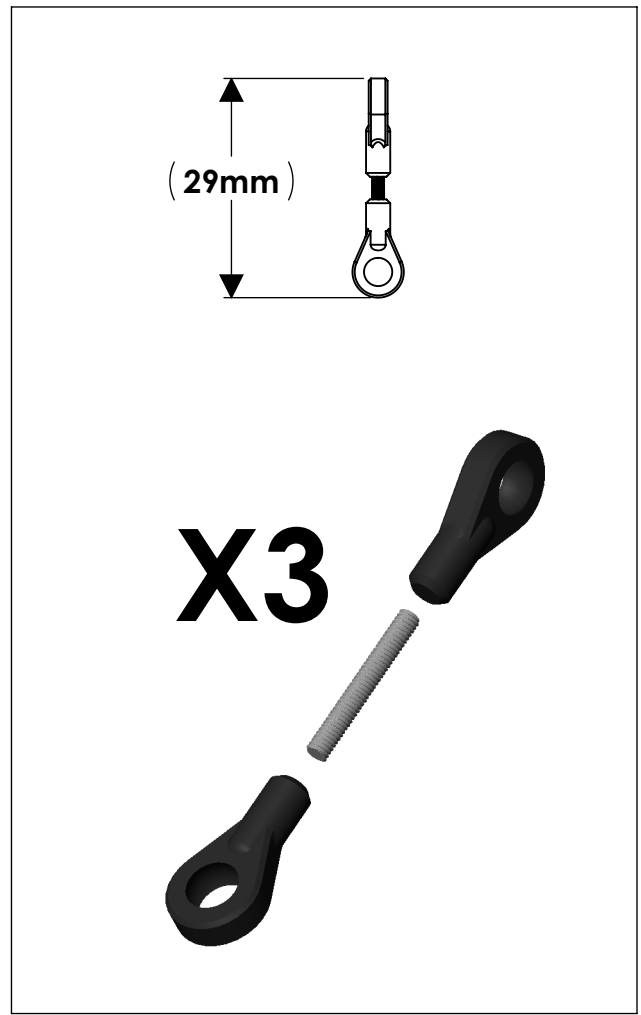
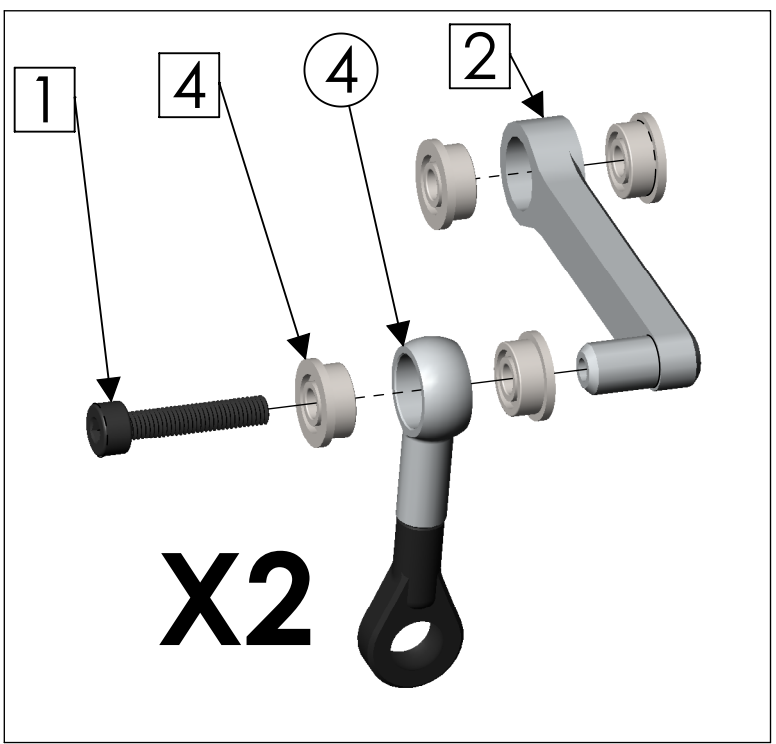
**Note: This item comes pre assembled.**



ITEM NO.	PART NUMBER	DESCRIPTION	QTY.
1			1
2			1
3			2
4			1
			1
			2
			1

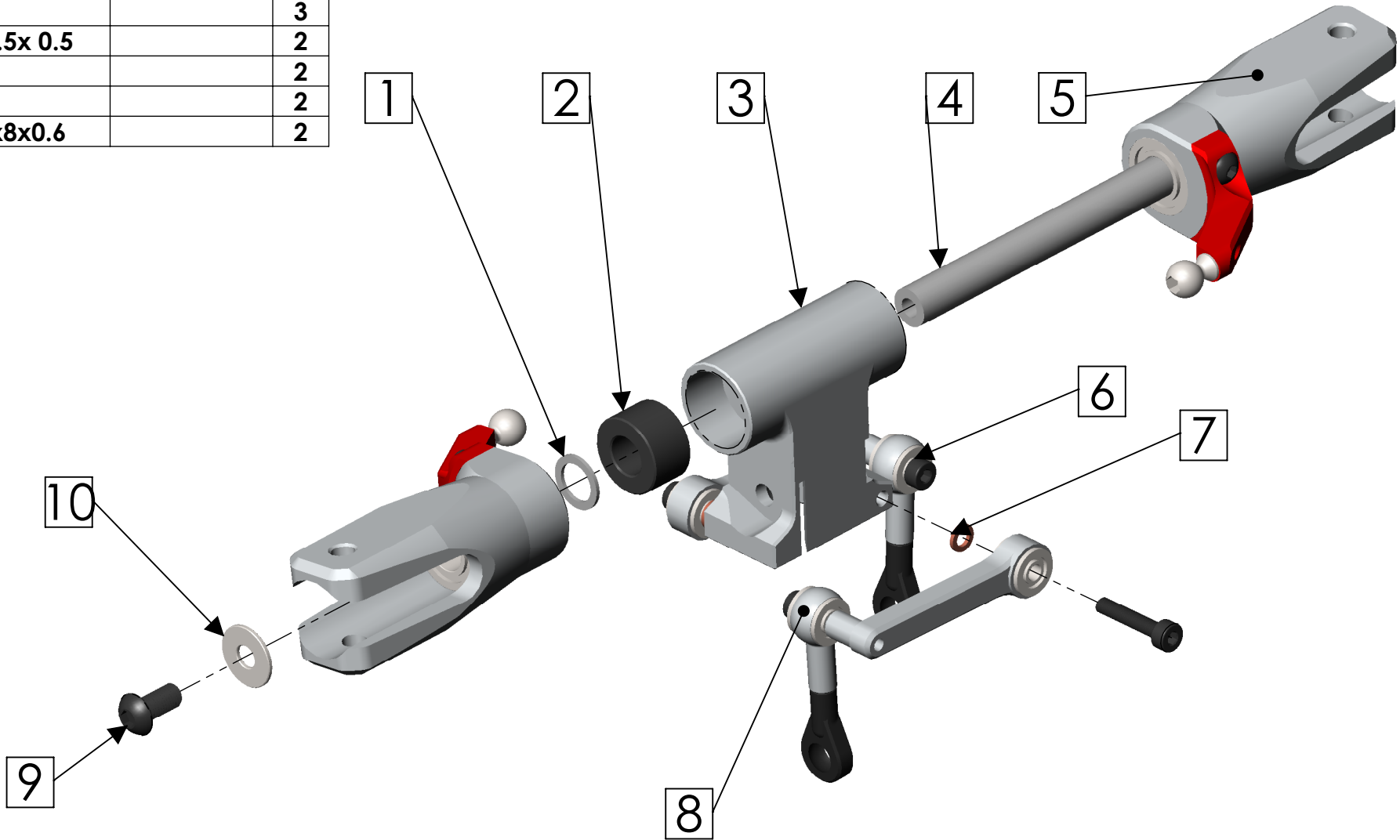
ITEM NO.	PART NUMBER	DESCRIPTION	QTY.
1			2
2			1

ITEM NO.	PART NUMBER	DESCRIPTION	QTY.
1	Threaded rod - 12mm		2
2			2
3			1

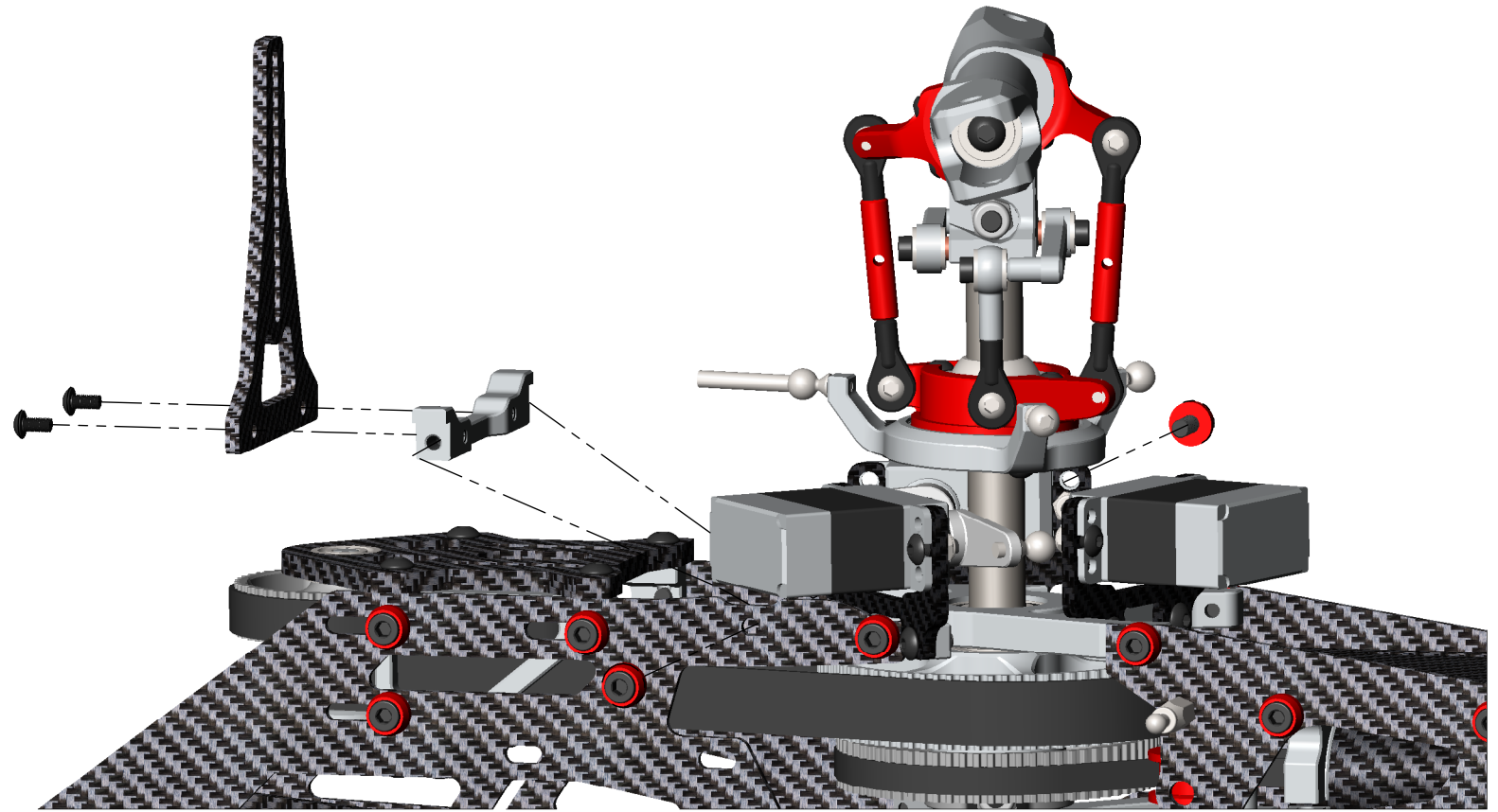


ITEM NO.	PART NUMBER	DESCRIPTION	QTY
1			2
2			2
3			1
4			1
5			2
6			3
7	Shim - 3x5.5x 0.5		2
8			2
9			2
10	Washer 3x8x0.6		2

**Animation**

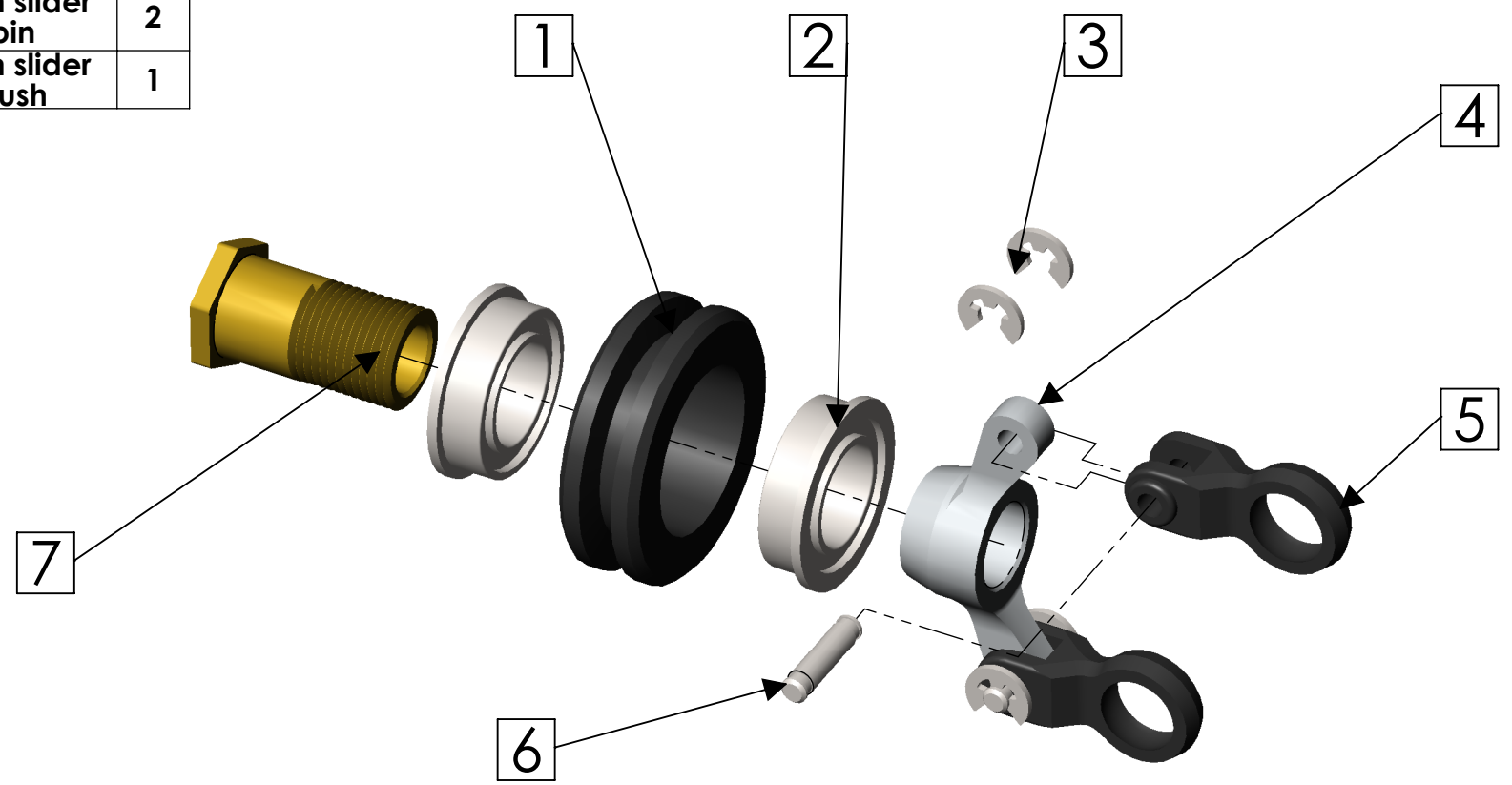






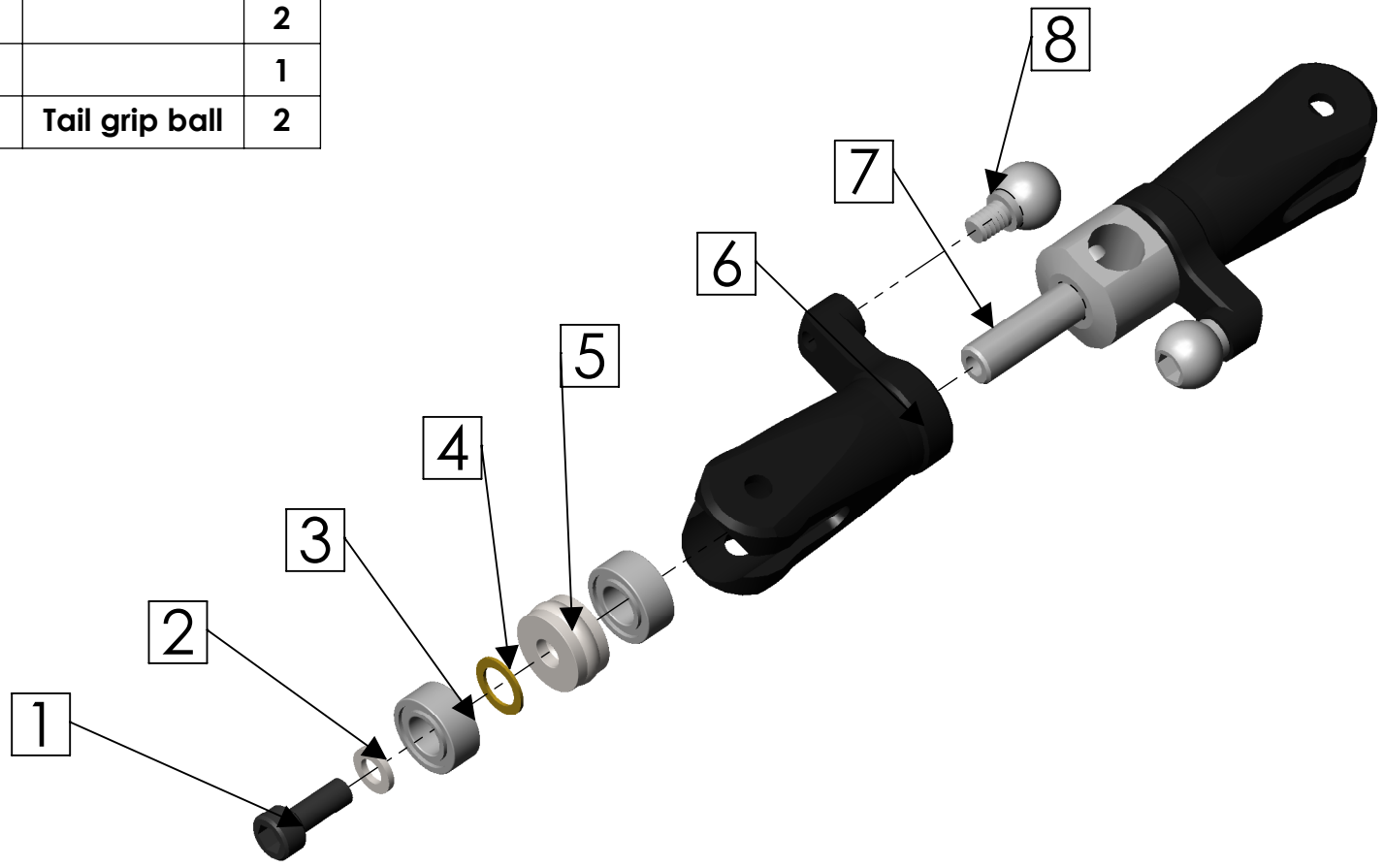
ITEM NO.	PART NUMBER	DESCRIPTION	QTY
1			1
2			2
3	E-clip		4
4			1
5			2
6		Pitch slider pin	2
7		Pitch slider bush	1

**Note: This item comes pre assembled.**

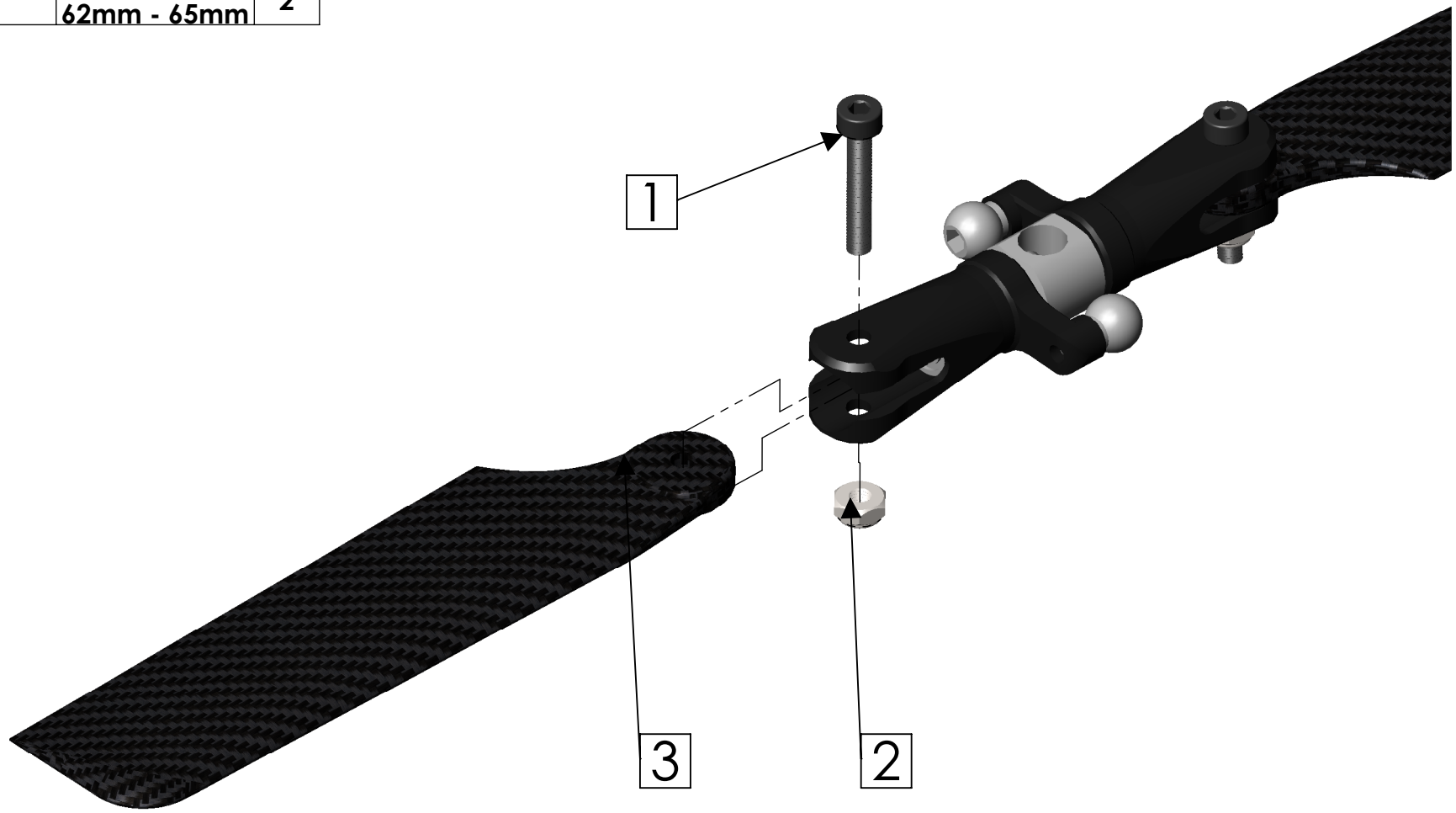




ITEM NO.	PART NUMBER	DESCRIPTION	QTY.
1			2
2			2
3	ZHOUCHEN-3-6-25		4
4			2
5			2
6			2
7			1
8		Tail grip ball	2



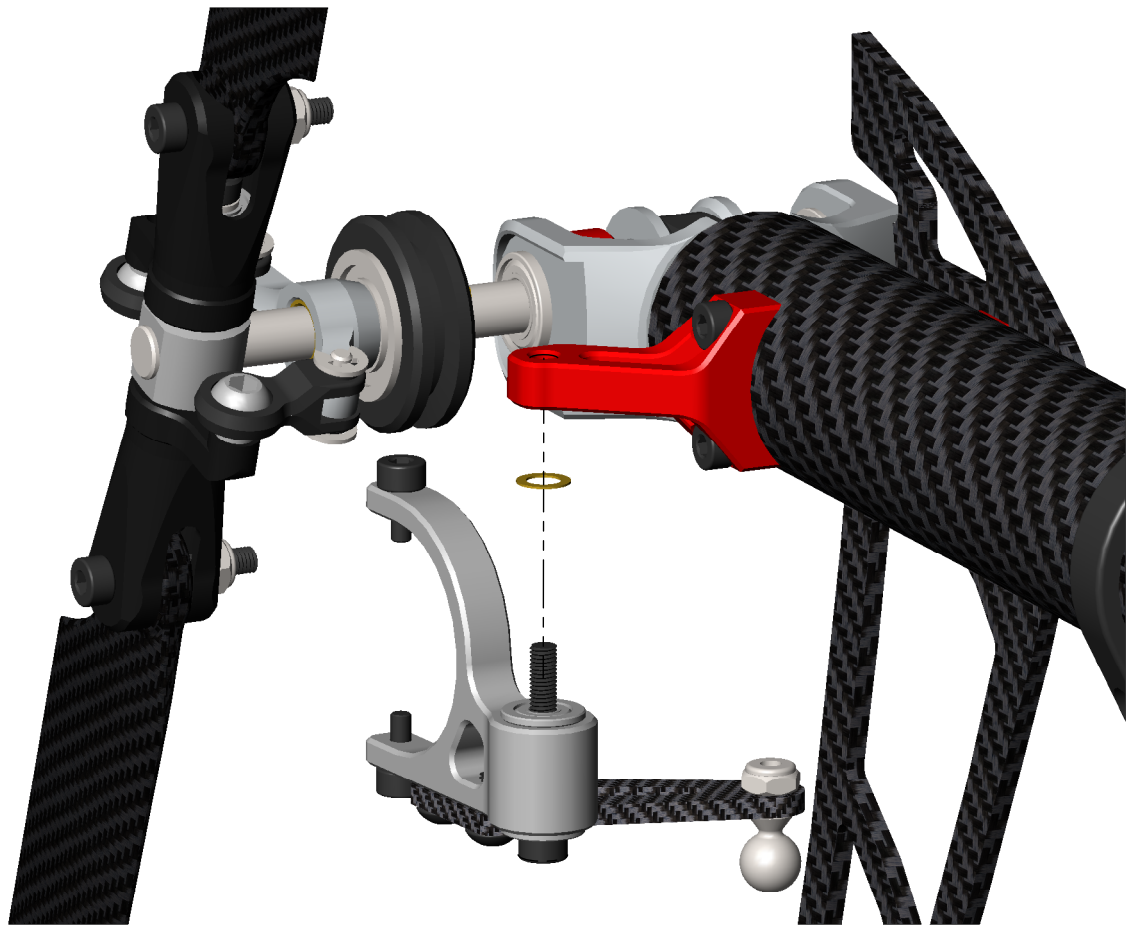
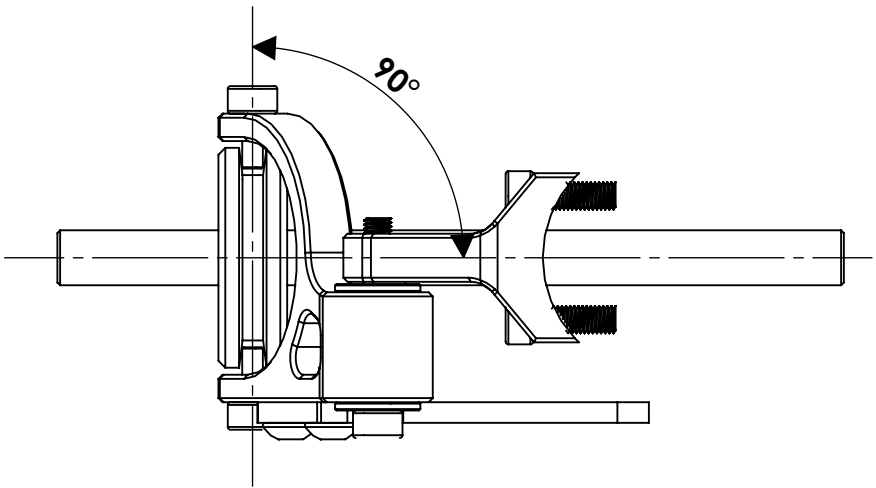
ITEM NO.	PART NUMBER	DESCRIPTION	QTY.
1			2
2		M2 LOCK NUT	2
3		Tail Blade 62mm - 65mm	2







Check that the pitch slider fork is square to the shaft and the slider does not bind. loosen bolts and adjust if required.

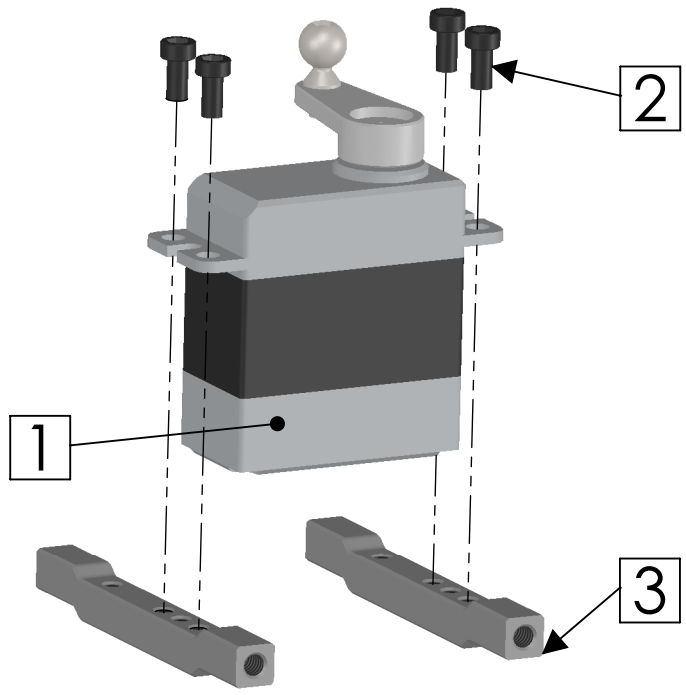


ITEM NO.	PART NUMBER	DESCRIPTION	QTY.
1			1
2			4
3			2

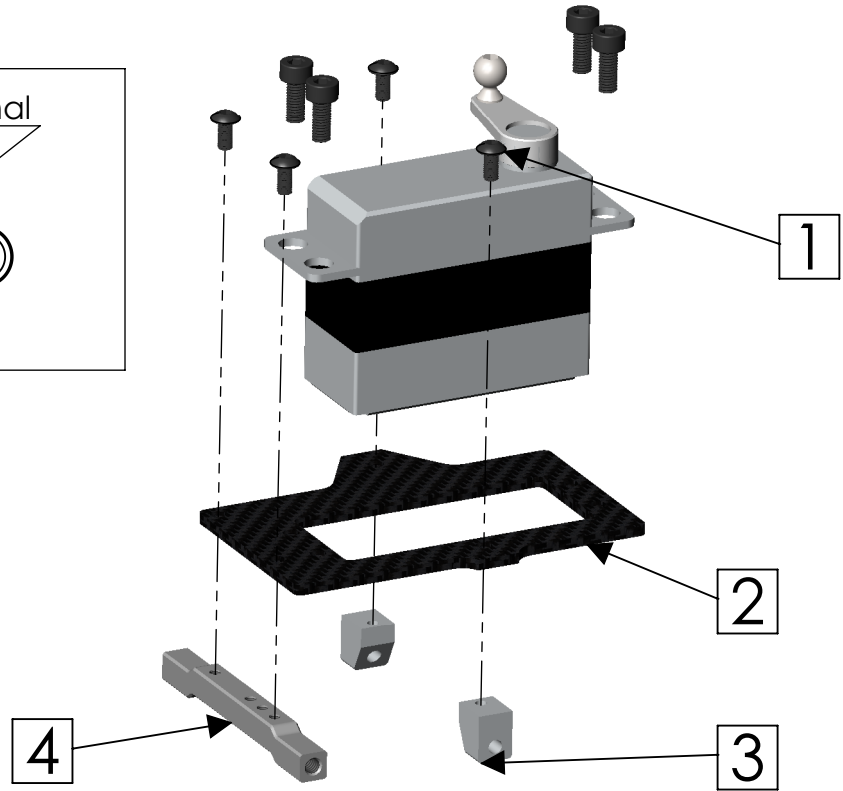
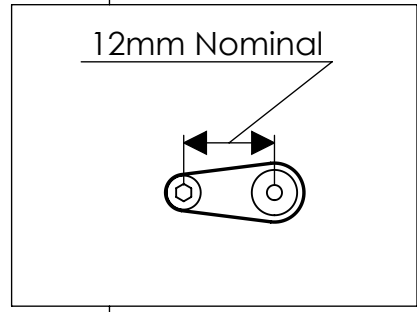
The Chase 360 has 2 Tail servo location options,  
 1. At the front, high in the frame for the lowest moment of inertia and optimal CG.  
 2. Under the tail boom at the rear of the frame.

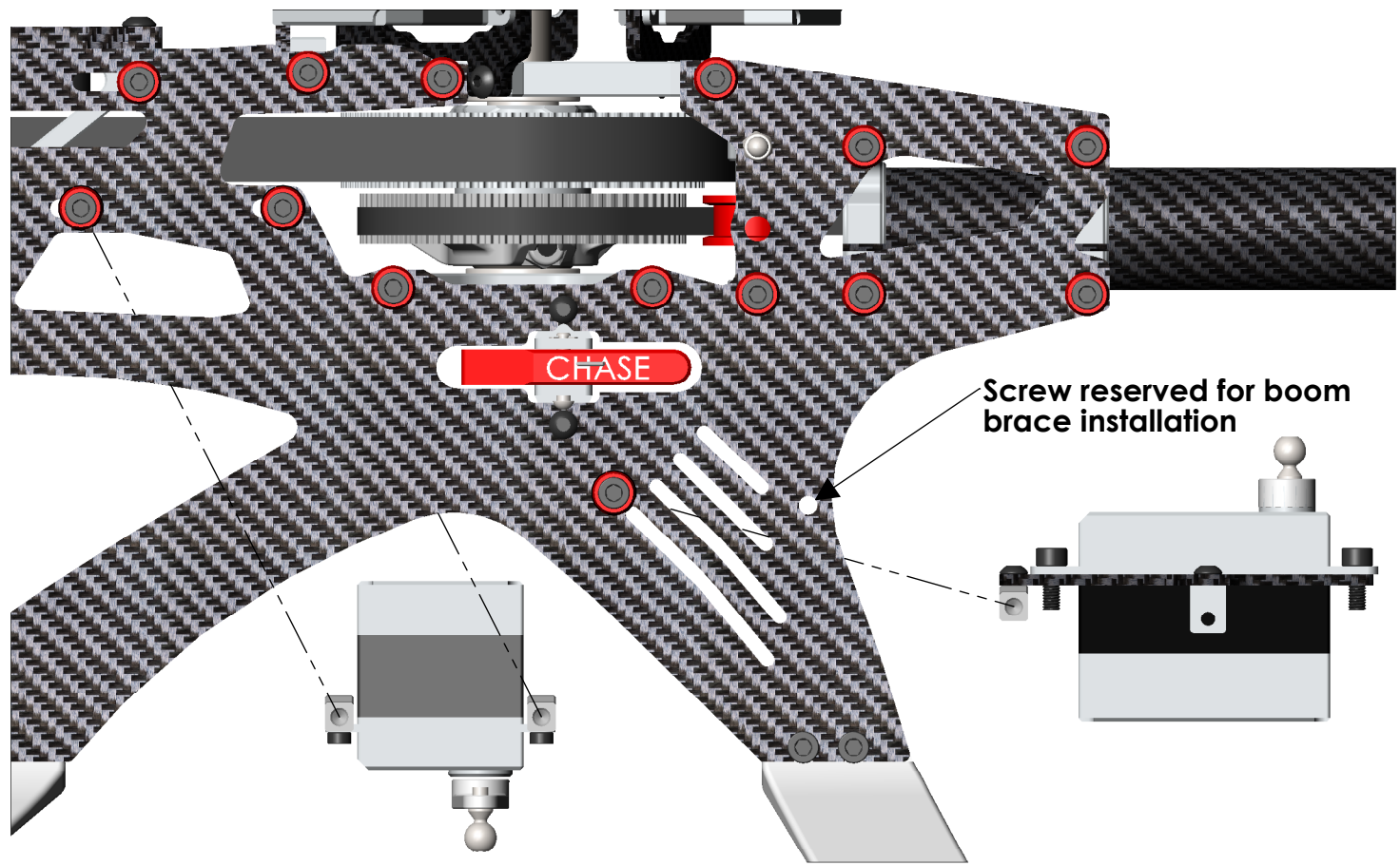
ITEM NO.	PART NUMBER	DESCRIPTION	QTY.
1		M2 x 4 - Button head	4
2			1
3			2
4			1
5	mini servo		1
6			4

**Front servo mount option. Micro servo ONLY.**

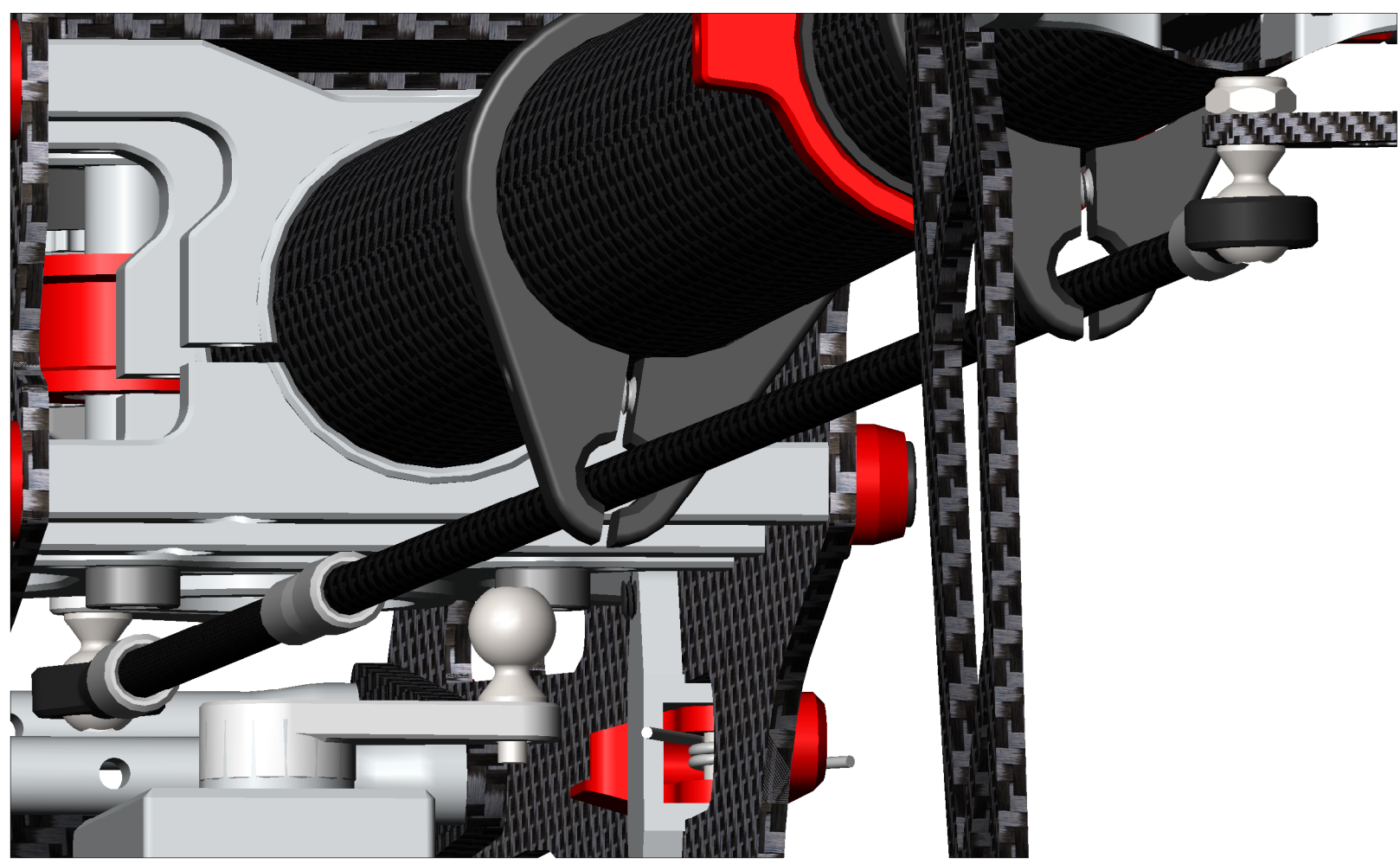
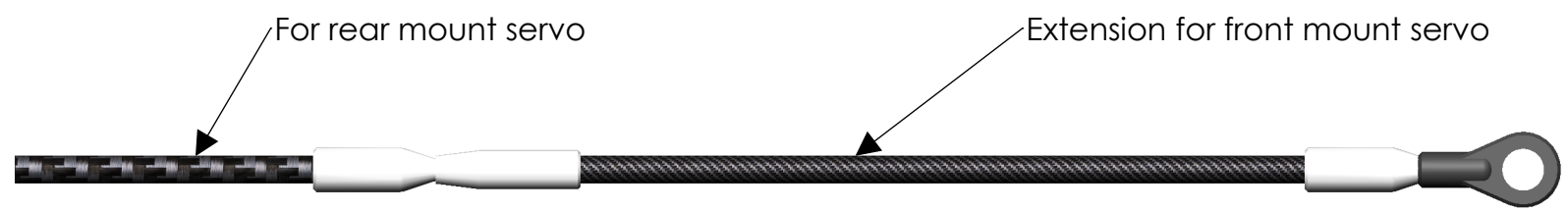


**Rear servo mount option. Mini or Micro servo**





Build the tail pushrod to suit your desired servo location





**Boom Brace may be mounted in multiple locations**

